



 1
Bedroom

 1
Bathroom



We are proud to present this spacious one bedroom apartment in the heart of Birmingham City Centre.

You will benefit from a good sized living room with open plan kitchen area, comprising of separate washer dryer and tumble dryer, tall fridge freezer and dishwasher along with hob and convection oven. One double bedroom with a shower room and a Separate WC. Furnishings seen in the pictures are optional.

Located Opposite New Street Station this apartment is perfect for city centre living and would also be a great buy to let opportunity.

*Service Charge £2045.52

*Ground Rent £250

*EWS1 Certificate Passed

*Ideal investment property

*City Centre

Please contact us to arrange viewing on this apartment ASAP.

Approximate Gross Internal Area = 49.7 sq m / 535 sq ft

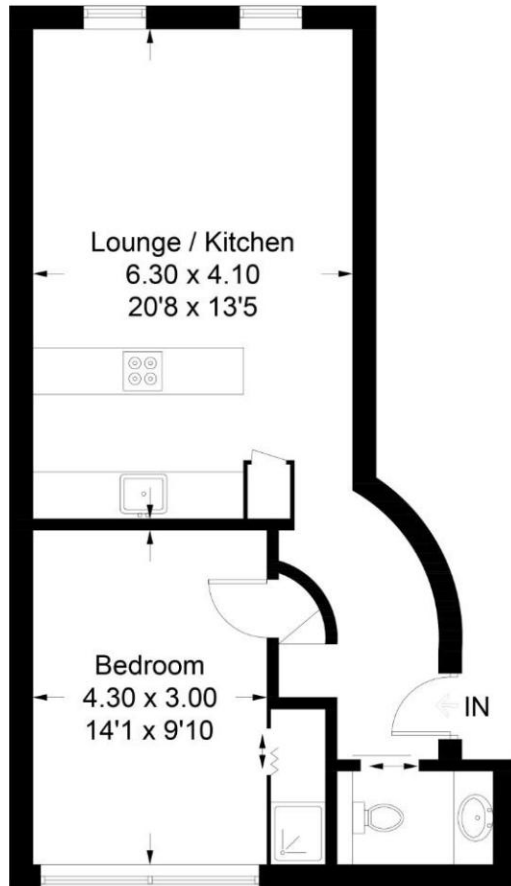


Illustration for identification purposes only, measurements are approximate, not to scale. floorplansUsketch.com © (ID 527818)

Energy Efficiency Rating		Current	Potential
Very energy efficient - lower running costs			
(92-100)	A		
(81-91)	B	84	85
(69-80)	C		
(55-68)	D		
(39-54)	E		
(21-38)	F		
(1-20)	G		
Not energy efficient - higher running costs			
England, Scotland & Wales		EU Directive 2002/91/EC 