

EDEN HOMES

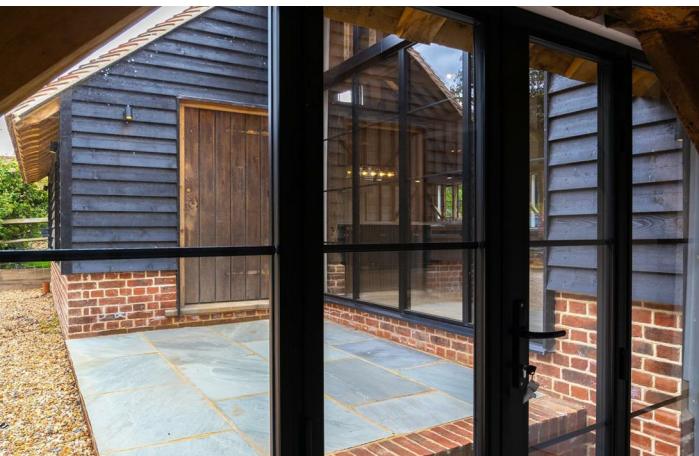
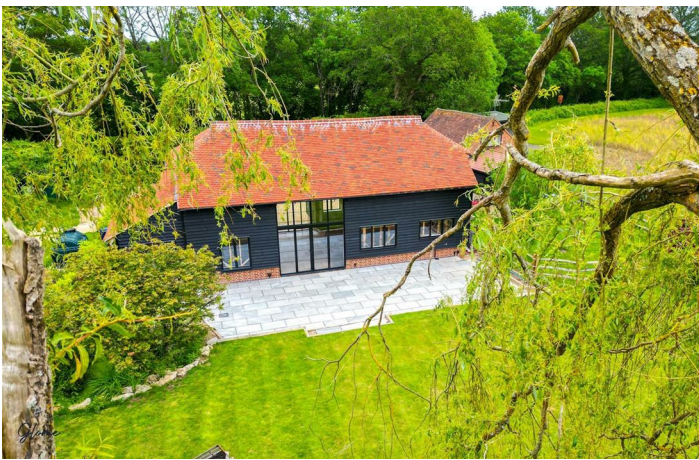
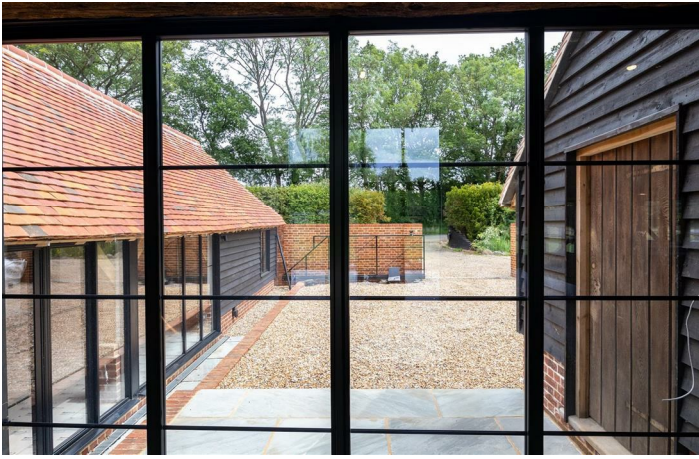


Willow Barn Knowle Lane, Cranleigh, GU6 8JW

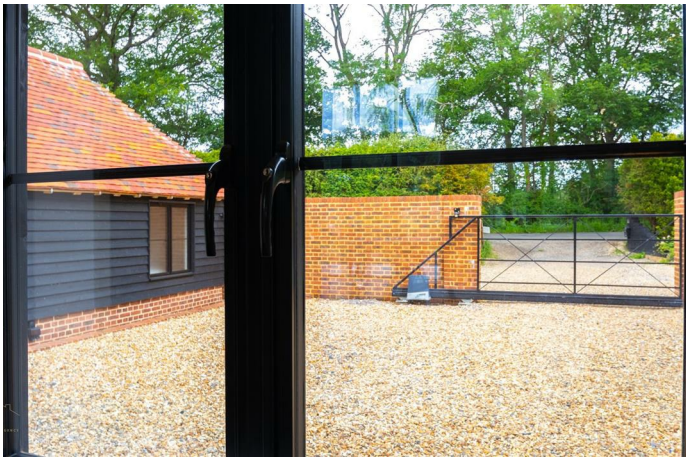
Guide price £1,275,000

Welcome to Willow Barn, an exquisite grade two listed barn conversion that seamlessly blends rustic charm with modern luxury. Situated on Knowle Lane, Cranleigh, this stunning three-bedroom home overlooks the serene green fields of the neighbouring countryside, offering a perfect retreat in a picturesque setting. Willow Barn features three charming bedrooms, each designed to provide a tranquil haven. The master bedroom is a standout with its view overlooking the courtyard driveway, combining elegance with comfort, boasts of light & has original beams with en-suite. This recently converted barn has been meticulously crafted to preserve its original character. The property boasts impressive high ceilings, Lutron lighting & original beams, creating a striking visual impact and maintaining the barn's historical essence. The heart of the home is the open-plan living area, which includes a bespoke island kitchen. This space is designed for both everyday living and entertaining, featuring front-to-back glazing that floods the area with natural light & opens out to the spacious garden. Adding to the charm of Willow Barn is a versatile mezzanine. Ideal as a snug, office, or an additional fourth bedroom area, this space enhances the functionality & appeal of the home. The large garden is perfect for outdoor living and entertaining, providing ample space to enjoy the surrounding natural beauty. Whether it's dining al fresco or simply relaxing, the garden is a tranquil escape. The property includes two high-spec bathrooms. The family bathroom is particularly luxurious, featuring a standalone bath and a separate shower, offering a spa-like experience at home. Abundance of Light: One of the home's most striking features is the extensive glazing from front to back, which ensures an abundance of natural light throughout the living spaces, creating a bright and airy ambiance. The property is complemented by a private courtyard driveway, adding to the overall convenience & charm.











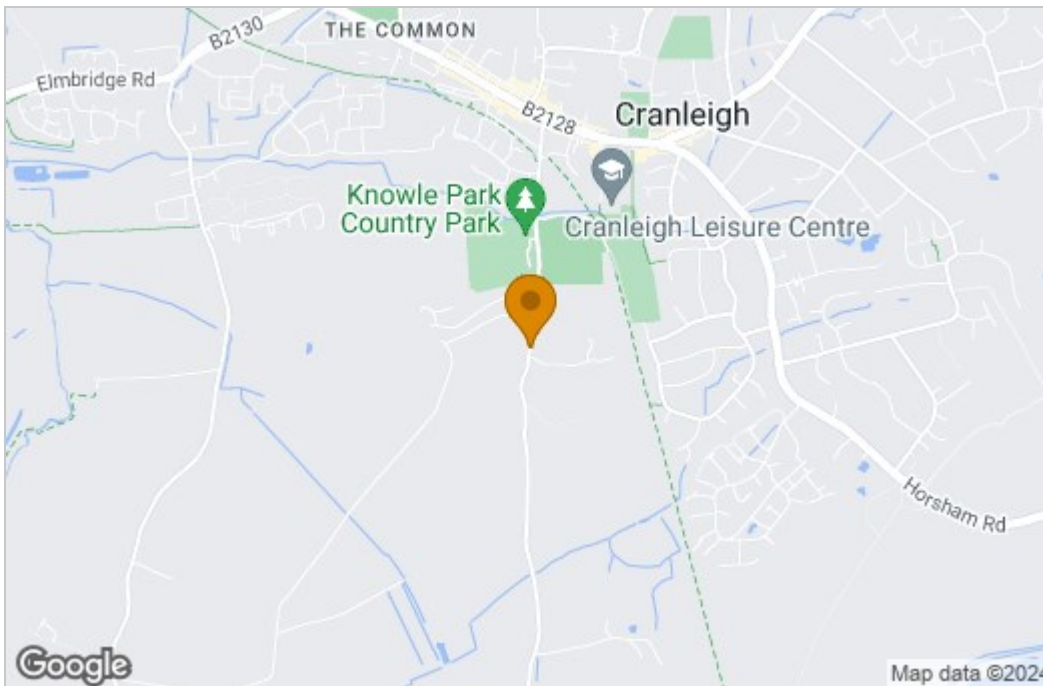
Experience the unparalleled charm and elegance of Willow Barn. This stunning barn conversion offers the perfect blend of rustic character, modern luxury, and breathtaking views, making it the ultimate country retreat. Don't miss the opportunity to make this exceptional property your new home. Schedule a viewing today!

Floor Plan

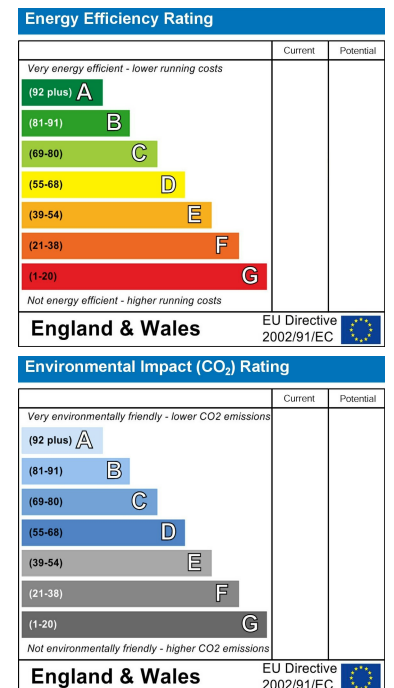
APPROXIMATE FLOOR AREA = 1787 SQ FT / 166.1 SQ M
(INCLUDING MEZZANINE / STUDY AREA)
INCLUDING LIMITED USE AREA (13 SQ FT / 1.2 SQ M)



Area Map



Energy Efficiency Graph



These particulars, whilst believed to be accurate are set out as a general outline only for guidance and do not constitute any part of an offer or contract. Intending purchasers should not rely on them as statements of representation of fact, but must satisfy themselves by inspection or otherwise as to their accuracy. No person in this firm's employment has the authority to make or give any representation or warranty in respect of the property.