

EDEN HOMES



Flat 41, Wildcroft Manor Wildcroft Road, London, SW15 3TT

£3,449 Per month

AVAILABLE IMMEDIATELY) Stunning Three-Bedroom Ground Floor Apartment in Wildcroft Manor.

Welcome to this beautiful three-bedroom ground floor apartment situated in the prestigious and private development of Wildcroft Manor, Putney. This exquisite residence is fully furnished and available for immediate occupancy, offering a perfect blend of comfort and elegance for discerning tenants.

Wildcroft Manor is ideally situated in Putney, SW15, a sought-after area known for its excellent amenities, vibrant community, and easy access to Central London. The development is surrounded by green open spaces of Putney Heath and Wimbledon Common as well as Richmond Park, top-rated schools, and a variety of shops, cafes, and restaurants. Residents benefit from excellent transport links, with Putney Railway Station and East Putney Underground Station nearby, providing swift connections to Central London and beyond.

Additionally, the area is well-served by local bus routes, making commuting and exploring the city a breeze.









Key Features:

Three Spacious Bedrooms: The apartment boasts three well-appointed bedrooms, providing ample space for families or professionals seeking a luxurious living environment.

Fully Furnished: Move in with ease and convenience as this apartment comes fully furnished with high-quality furniture and tasteful decor, ensuring a stylish and comfortable living experience from day one.

Private Development: Located within the exclusive Wildcroft Manor, this apartment benefits from the security and tranquility of a private development, offering peace of mind and a prestigious address.

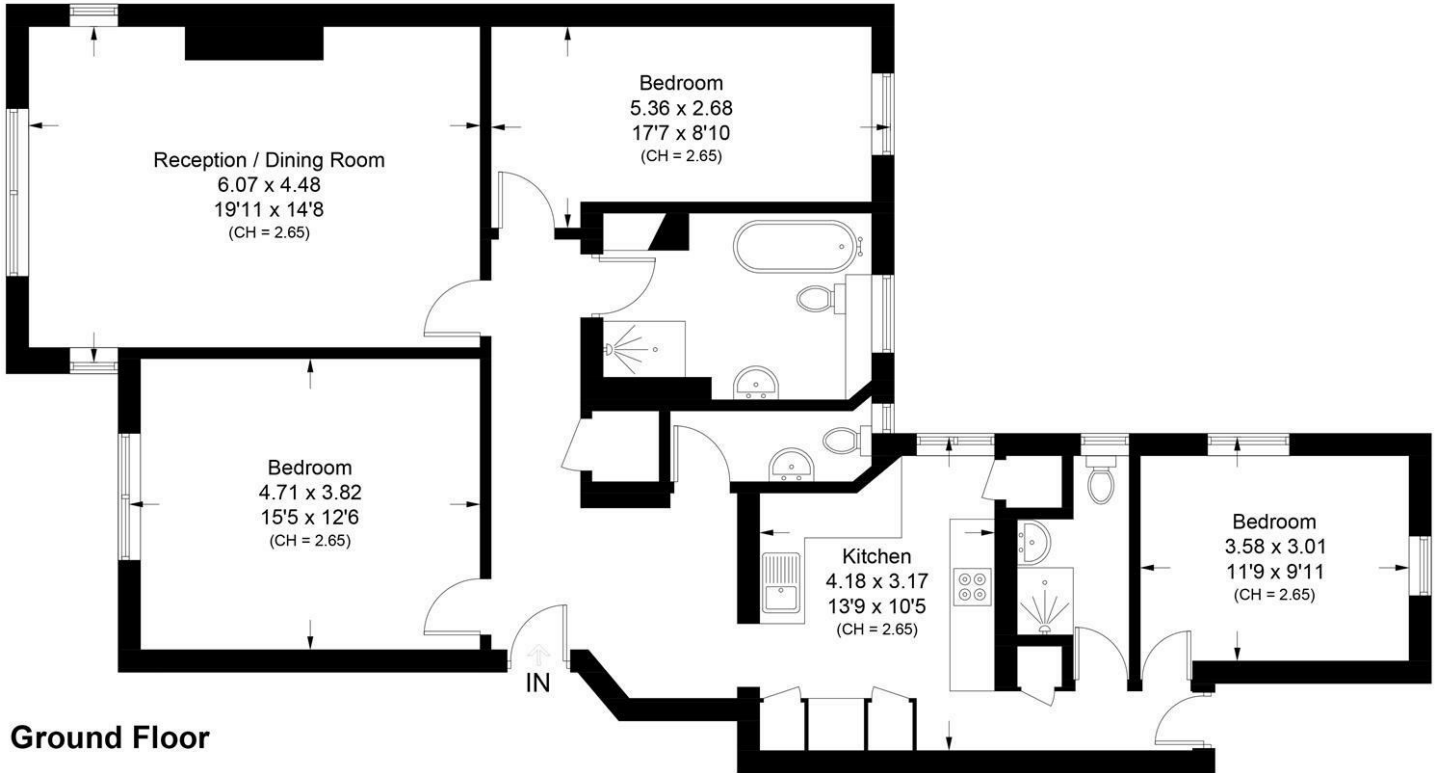
Communal Gardens: Enjoy the beautifully maintained communal gardens, perfect for leisurely strolls or relaxing in a serene outdoor setting. The lush greenery provides a refreshing escape from the hustle and bustle of city life.

Porter Service: The presence of a dedicated porter ensures that all your needs are promptly addressed, adding an extra layer of convenience and security to your daily living.

Floor Plan

Wildcroft Manor, SW15

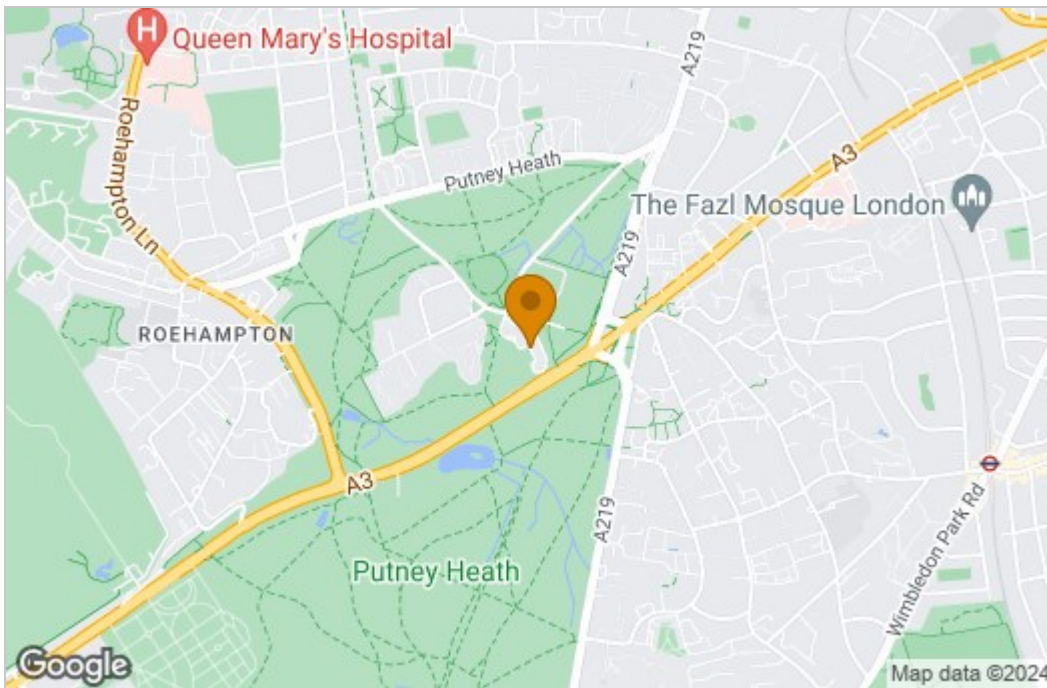
Approximate Area = 118.4 sq m / 1274 sq ft
Including Limited Use Area (1.5 sq m / 16 sq ft)



Ground Floor

Surveyed and drawn in accordance with the International property measurements standards (IPMS 2: Residential) Not drawn to scale unless stated. Whilst every care is taken in the preparation of this plan, please check all dimensions, shapes and compass bearings before making any decisions reliant upon them.

Area Map



Energy Efficiency Graph

Energy Efficiency Rating		Current	Potential
Very energy efficient - lower running costs			
(92 plus) A			
(81-91) B			
(69-80) C			
(55-68) D			
(39-54) E			
(21-38) F			
(1-20) G			
Not energy efficient - higher running costs			
England & Wales			
		EU Directive 2002/91/EC	
Environmental Impact (CO₂) Rating		Current	Potential
Very environmentally friendly - lower CO ₂ emissions			
(92 plus) A			
(81-91) B			
(69-80) C			
(55-68) D			
(39-54) E			
(21-38) F			
(1-20) G			
Not environmentally friendly - higher CO ₂ emissions			
England & Wales			
		EU Directive 2002/91/EC	

These particulars, whilst believed to be accurate are set out as a general outline only for guidance and do not constitute any part of an offer or contract. Intending purchasers should not rely on them as statements of representation of fact, but must satisfy themselves by inspection or otherwise as to their accuracy. No person in this firm's employment has the authority to make or give any representation or warranty in respect of the property.