

EDEN HOMES



170 Huntingfield Road, London, SW15 5ES

Asking price £335,000

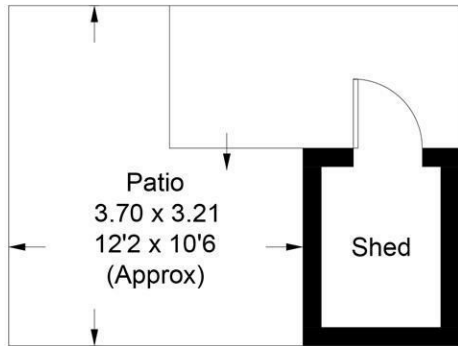
Nestled in the heart of the sought-after area of SW15, this one-bedroom maisonette at presents an exceptional opportunity for those seeking a blank canvas to create their dream home. Boasting a prime location and a private front garden, this property offers a perfect blend of tranquility and convenience. Situated within the ever popular Dover House conservation area, this maisonette is strategically located, providing easy access to a range of amenities and transport links. Residents will benefit from the convenience of nearby shops, restaurants, and parks, making it an ideal choice for those who appreciate both urban and suburban lifestyles. The green open spaces of Putney Heath and Richmond Park are close by as well as the convenience of Barnes mainline Station and local bus transport links.



Floor Plan

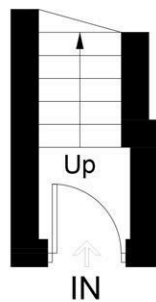
Huntingfield Road, SW15

Approximate Gross Internal Area = 55.8 sq m / 601 sq ft
(Excluding Shed)

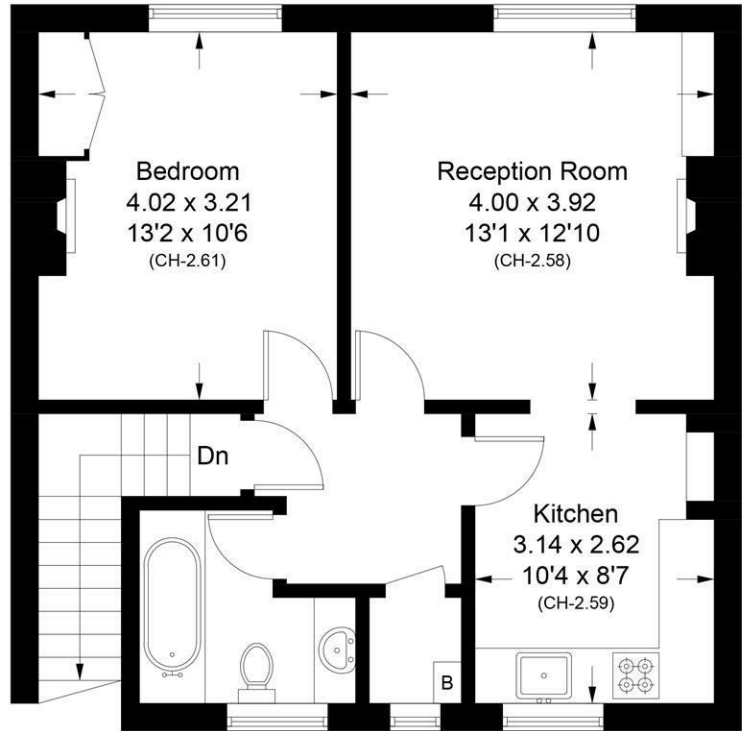


(Not Shown In Actual Location / Orientation)

Ground Floor



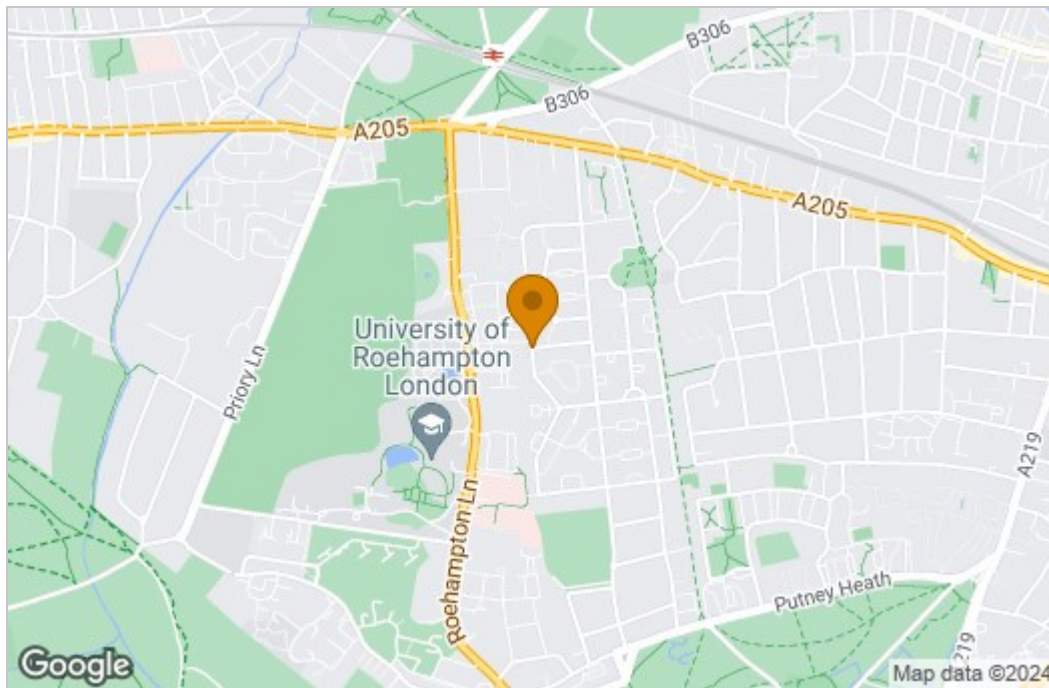
Ground Floor



First Floor

This plan is for layout guidance only. Not drawn to scale unless stated. Windows and door openings are approximate. Whilst every care is taken in the preparation of this plan, please check all dimensions, shapes and compass bearings before making any decisions reliant upon them. (ID1038109)

Area Map



Energy Efficiency Graph

Energy Efficiency Rating		Current	Potential
Very energy efficient - lower running costs			
(92 plus) A			
(81-91) B			
(69-80) C			
(55-68) D			
(39-54) E			
(21-38) F			
(1-20) G			
Not energy efficient - higher running costs			
England & Wales		EU Directive 2002/91/EC	
Environmental Impact (CO ₂) Rating		Current	Potential
Very environmentally friendly - lower CO ₂ emissions			
(92 plus) A			
(81-91) B			
(69-80) C			
(55-68) D			
(39-54) E			
(21-38) F			
(1-20) G			
Not environmentally friendly - higher CO ₂ emissions			
England & Wales		EU Directive 2002/91/EC	

These particulars, whilst believed to be accurate are set out as a general outline only for guidance and do not constitute any part of an offer or contract. Intending purchasers should not rely on them as statements of representation of fact, but must satisfy themselves by inspection or otherwise as to their accuracy. No person in this firm's employment has the authority to make or give any representation or warranty in respect of the property.