



## **BERWICK ROAD RAINHAM**

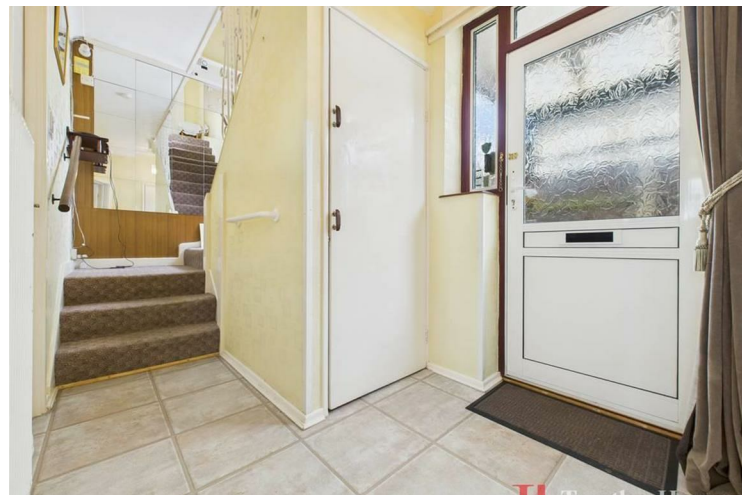
**£600,000**  
Asking price

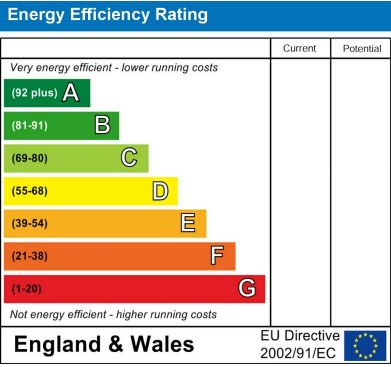
Welcome to Berwick Road, Rainham much loved family home that has been the setting for years of cherished memories. Now ready for its next chapter, this spacious property offers the perfect opportunity for a new family to create a home of their own in one of Rainham's most sought after residential areas.

As you approach the property, the detached garage at the front sets the tone for the home's potential whether used for secure storage or a workshop. There is ample parking to the front for your growing family.

Step inside to a welcoming entrance hallway that immediately feels warm and inviting. A convenient downstairs W/C adds practicality, while the spacious kitchen provides a central hub for family life. There is ample room here for meal preparation, making it a sociable space that naturally brings people together.

The bright lounge to the rear of the property opens into a single-storey extension, creating a flexible second reception area filled with natural light. This extension leads directly onto the stunning rear garden, which stretches over 100 feet in length. It's a true highlight of the home – a peaceful and private space with endless potential for outdoor entertaining, children's play areas, or even future landscaping projects.





Agents Note: Whilst every care has been taken to prepare these particulars, they are for guidance purposes only. All measurements are approximate and are for general guidance purposes only and whilst every care has been taken to ensure their accuracy, they should not be relied upon and potential buyers/tenants are advised to recheck the measurements

**Together Homes**  
21 Station Parade  
Hornchuch  
RM12 5AB

01708 320 600  
sales@togetherhomes.co.uk  
togetherhomes.co.uk

