

# **T** Together Homes



## **MALPAS ROAD GRAYS**

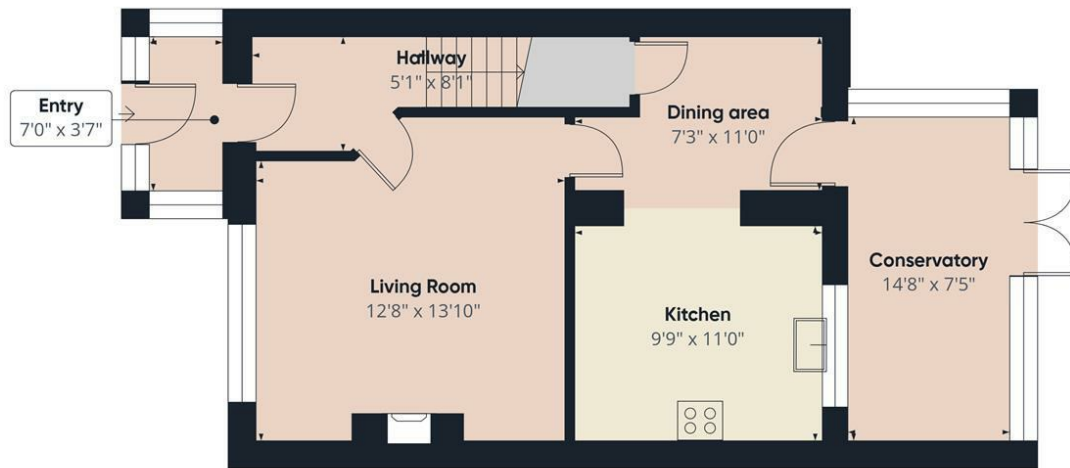
**£375,000**  
Offers in excess

This well maintained and spacious three bedroom semi detached house is offered with no onward chain and is perfectly located in a sought after residential area of Grays. Ideal for families or first-time buyers, the property combines comfort, convenience, and practical living space.

The ground floor features a bright and welcoming lounge, perfect for relaxing or entertaining guests. The open plan kitchen and dining area offers a modern, functional space that flows beautifully into a conservatory, providing an additional reception area with garden views.

Upstairs, the property boasts three good sized bedrooms and a family bathroom, all located on the first floor. Three good size bedrooms deal for growing families or those needing extra space for a home office or guest room.





Floor 0



Floor 1

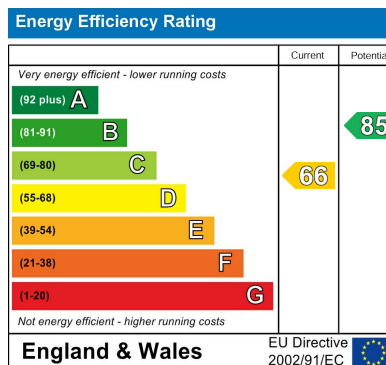
**Approximate total area<sup>m</sup>**  
976 ft<sup>2</sup>

(1) Excluding balconies and terraces

While every attempt has been made to ensure accuracy, all measurements are approximate, not to scale. This floor plan is for illustrative purposes only.

Calculations are based on RICS IPMS 3C standard.

GIRAFFE360



Agents Note: Whilst every care has been taken to prepare these particulars, they are for guidance purposes only. All measurements are approximate and are for general guidance purposes only and whilst every care has been taken to ensure their accuracy, they should not be relied upon and potential buyers/tenants are advised to recheck the measurements

**Together Homes**  
21 Station Parade  
Hornchuch  
RM12 5AB

01708 320 600  
sales@togetherhomes.co.uk  
togetherhomes.co.uk

**Together Homes**