

# **H** Together Homes



## **FERNBANK AVENUE HORNCHURCH**

**£550,000**

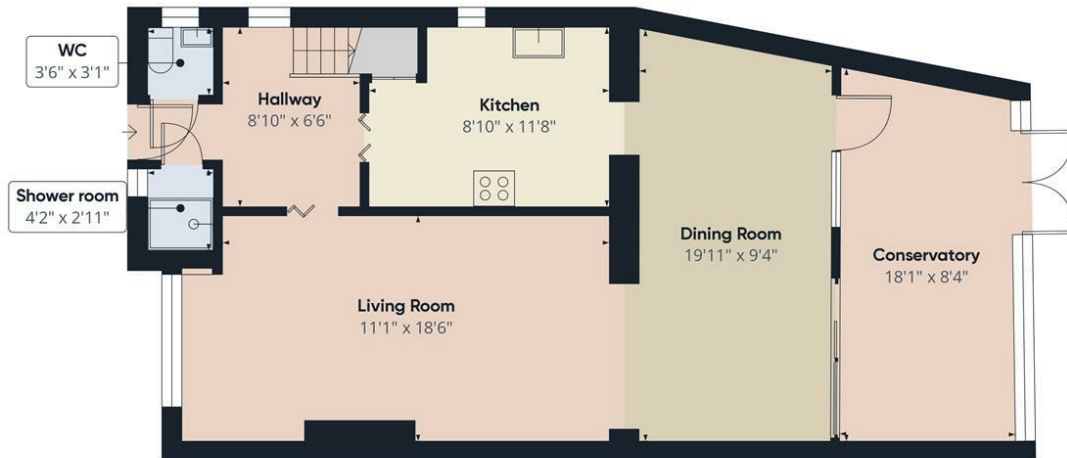
**Offers in excess**

Nestled in a desirable location, Fernbank Avenue, Hornchurch offers a wonderful family home with endless potential. This spacious property boasts a breath taking garden one of the largest in the area, providing the perfect space for outdoor entertaining, gardening, or simply relaxing. The garden also benefits from shared side access, ensuring convenience and easy access to and from the house.

With off-street parking at the front, there's no need to worry about parking space, offering added ease and practicality. Inside, the home is equally impressive with a spacious lounge, perfect for family gatherings or unwinding in comfort.

The heart of the home is the extended kitchen/diner, which has been thoughtfully expanded to the rear, featuring a conservatory that floods the space with natural light, creating a delightful setting for dining or simply enjoying the views of the garden. The property also benefits from two well-appointed bathrooms, offering ample convenience for family living.





Approximate total area<sup>(1)</sup>  
1125.8 ft<sup>2</sup>

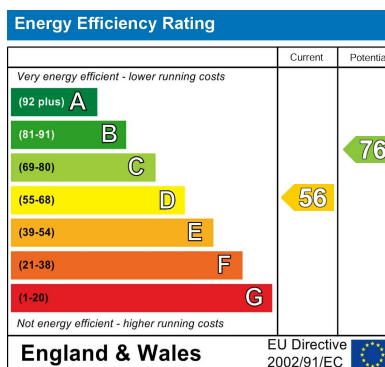


(1) Excluding balconies and terraces

While every attempt has been made to ensure accuracy, all measurements are approximate, not to scale. This floor plan is for illustrative purposes only.

Calculations were based on RICS IPMS 3C standard. Please note that calculations were adjusted by a third party and therefore may not comply with RICS IPMS 3C.

GIRAFFE360



Agents Note: Whilst every care has been taken to prepare these particulars, they are for guidance purposes only. All measurements are approximate and are for general guidance purposes only and whilst every care has been taken to ensure their accuracy, they should not be relied upon and potential buyers/tenants are advised to recheck the measurements

**Together Homes**  
21 Station Parade  
Hornchurch  
RM12 5AB

01708 320 600  
sales@togetherhomes.co.uk  
togetherhomes.co.uk

**Together Homes**