

H Together Homes



BADER WAY RAINHAM

£275,000

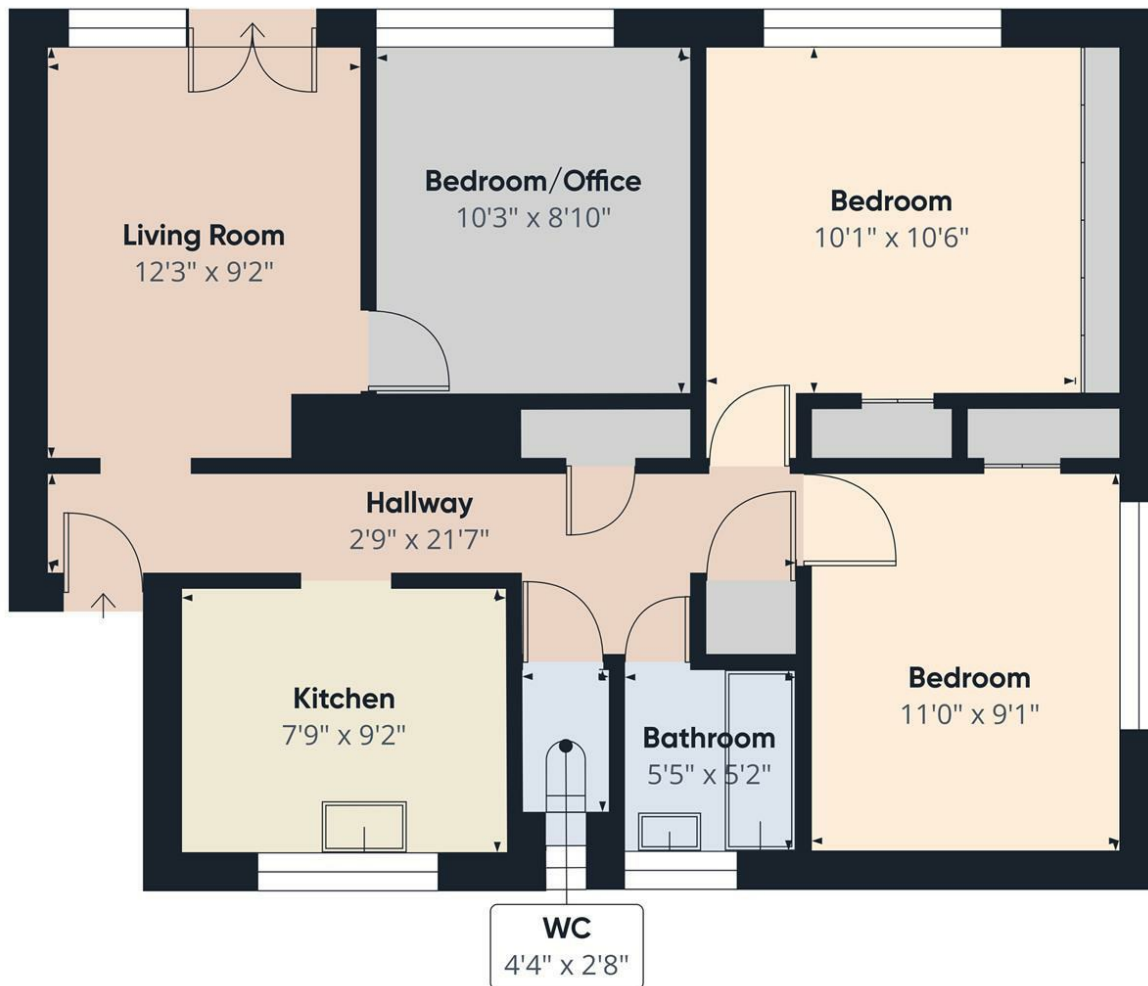
Leasehold

This beautifully presented 2-bedroom flat, converted to a 3-bedroom on the second floor, offers a fantastic opportunity for modern living in the heart of Rainham. Well-maintained and move-in ready, this home is perfect for anyone looking to settle in with minimal fuss.

The property features a bright living area, with ample natural light streaming through large windows. That creates an inviting atmosphere, ideal for relaxing or entertaining. The kitchen is sleek and modern, fully equipped with all the essentials to make meal preparation a breeze.

With two generously sized bedrooms, plus an additional room that could easily serve as a third bedroom, home office, or nursery, this flat provides versatile living space to suit your needs. The neutral decor throughout ensures it's easy to add your own personal touch. With loft space perfect for storage.





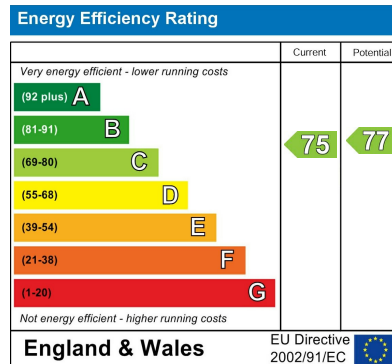
Approximate total area⁽¹⁾
654.45 ft²

(1) Excluding balconies and terraces

While every attempt has been made to ensure accuracy, all measurements are approximate, not to scale. This floor plan is for illustrative purposes only.

Calculations are based on RICS IPMS 3C standard.

GIRAFFE360



Agents Note: Whilst every care has been taken to prepare these particulars, they are for guidance purposes only. All measurements are approximate and are for general guidance purposes only and whilst every care has been taken to ensure their accuracy, they should not be relied upon and potential buyers/tenants are advised to recheck the measurements

Together Homes
21 Station Parade
Hornchurch
RM12 5AB

01708 320 600
sales@togetherhomes.co.uk
togetherhomes.co.uk

Together Homes