



GRIFFIN

THE PROPERTY PEOPLE



Guysfield Drive
Rainham, RM13 7AJ

Offers in excess of £400,000

GUIDE PRICE OF £400,000-£425,000

COMPLETE CHAIN

We at Griffin are pleased to bring to the market this 3 bedroom end of terrace house on Guysfield Drive, Rainham. You are within walking distance to Infant and Junior schools. Rainham and Elm Park Station are a 5 minute drive from the property, with great motorway links into London, Southend and the Dartford Crossing. The property offers off street parking and shared access to your garage. You enter the property via the porch into the inviting hallway. The lounge is open planned with the dining room, great for family time. The galley kitchen leads onto the conservatory (being used as a utility room) and sitting area overlooking the garden. The garden is the perfect size for your growing family, with another sitting area to the rear and a brick built shed ideal for barbecues. There is side access into the garden via the side gate. Upstairs, there are 3 good size bedrooms, family bathroom and access to the loft via a ladder.

- COMPLETE CHAIN
- 3 BEDROOMS
- END OF TERRACE HOUSE
- OFF STREET PARKING
- SHARED ACCESS TO THE GARAGE
- CONSERVATORY
- VIEWING IS A MUST

Viewing

Please contact our Griffin Residential Elm Park Office on 01708 320600 if you wish to arrange a viewing appointment for this property or require further information.



3



1



1



D

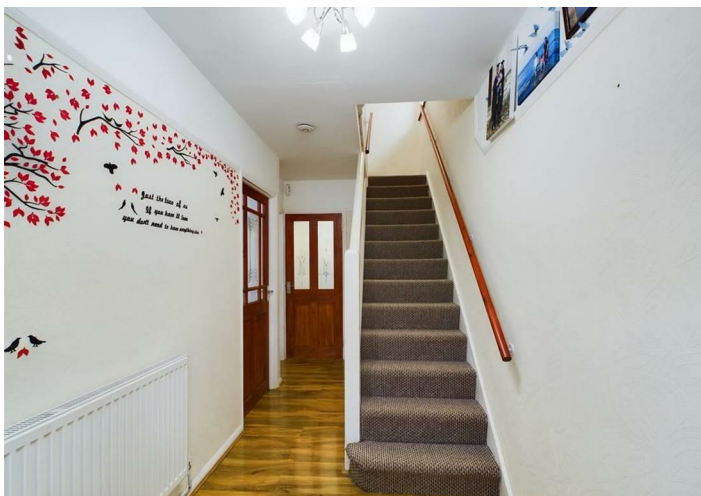
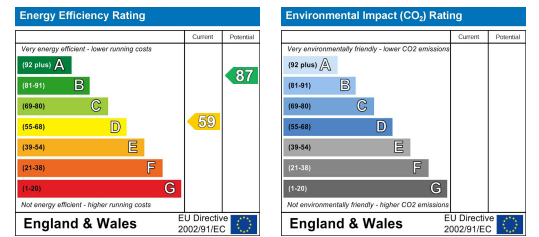
Floor Plan



Area Map



Energy Efficiency Graph



These particulars, whilst believed to be accurate are set out as a general outline only for guidance and do not constitute any part of an offer or contract. Intending purchasers should not rely on them as statements of representation of fact, but must satisfy themselves by inspection or otherwise as to their accuracy. No person in this firm's employment has the authority to make or give any representation or warranty in respect of the property.