



# GRIFFIN

THE PROPERTY PEOPLE



## Stapleton Crescent , Rainham, RM13 7HA

Guide price £375,000

GUIDE PRICE OF £375,000-£400,000

\*\*\*NO CHAIN\*\*\*

\*\*\*RENOVATED THROUGHOUT\*\*\*

\*\*\*VIEWING IS A MUST\*\*\*

We at Griffin are pleased to bring to the market this 2 double bedroom end of terrace house on Stapleton Crescent, Rainham. This property has been renovated throughout to a very good standard that only with a viewing could you fully appreciate. Within walking distance to schools, shops, and Elm Park Underground Station, this property is located in a quiet cul-de-sac with great access to all amenities. There is potential for off street parking / loft conversion STPP so it could grow with your family. The property benefits from 2 double bedrooms, good size 4 piece bathroom suite, spacious lounge, fitted kitchen and good size garden. Call the office to arrange your viewing

### Viewing

Please contact our Griffin Residential Elm Park Office on 01708 320600 if you wish to arrange a viewing appointment for this property or require further information.

- NO CHAIN
- MOVE STRAIGHT IN
- POTENTIAL FOR OFF STREET PARKING STPP
- TWO DOUBLE BEDROOMS
- GAS CENTRAL HEATING
- NEW FLOORING THROUGHOUT
- OPEN HOUSE SATURDAY 12TH OCTOBER
- VIEWING IS A MUST





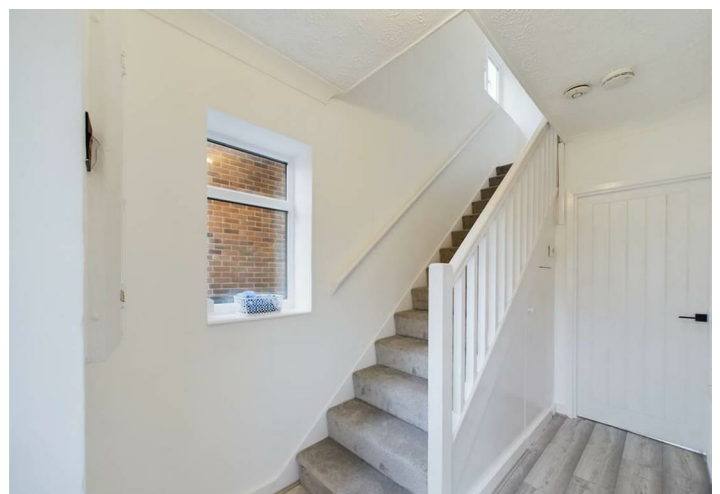
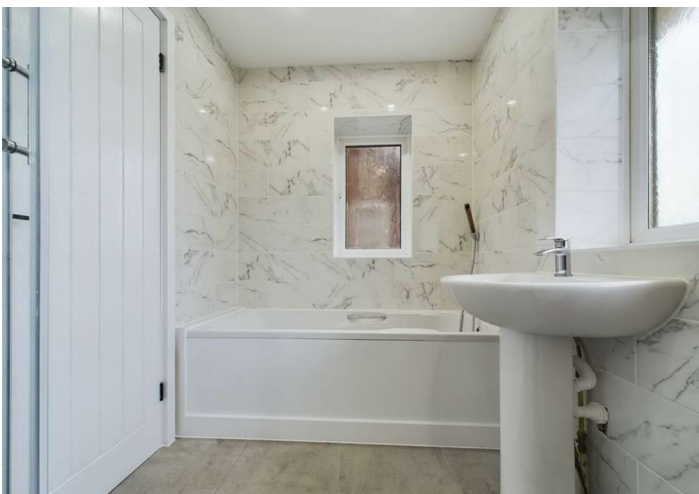
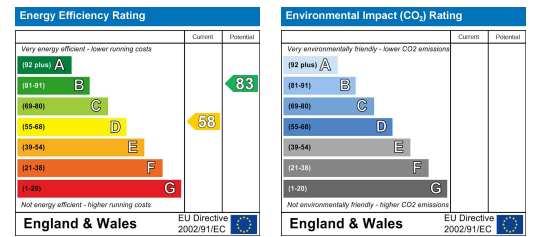
## Floor Plan



## Area Map



## Energy Efficiency Graph



These particulars, whilst believed to be accurate are set out as a general outline only for guidance and do not constitute any part of an offer or contract. Intending purchasers should not rely on them as statements of representation of fact, but must satisfy themselves by inspection or otherwise as to their accuracy. No person in this firm's employment has the authority to make or give any representation or warranty in respect of the property.