



**GRIFFIN**  
THE PROPERTY PEOPLE



## Bennetts Castle Lane , Dagenham, RM8 3YJ

Asking price £225,000

\*\*\*CALL TO ARRANGE YOUR VIEWING\*\*\*

Griffin are privileged to offer for sale this fabulous one bedroom maisonette, which is offered with NO ONWARD CHAIN. Once you enter the good size hallway, you go through to the open plan living room/kitchen. There is also a good size family bathroom. From the living room there are doors which lead through to the private garden which has side pedestrian access. The garden consists of a patio area with the remainder laid to lawn and rear access. The garden is approximately 30' long. The maisonette has parking to the front, double glazing throughout, laminate flooring and gas radiator heating. (untested by Griffin). This is an ideal property for a FIRST TIME BUYER with the transport links and the community which it is in.

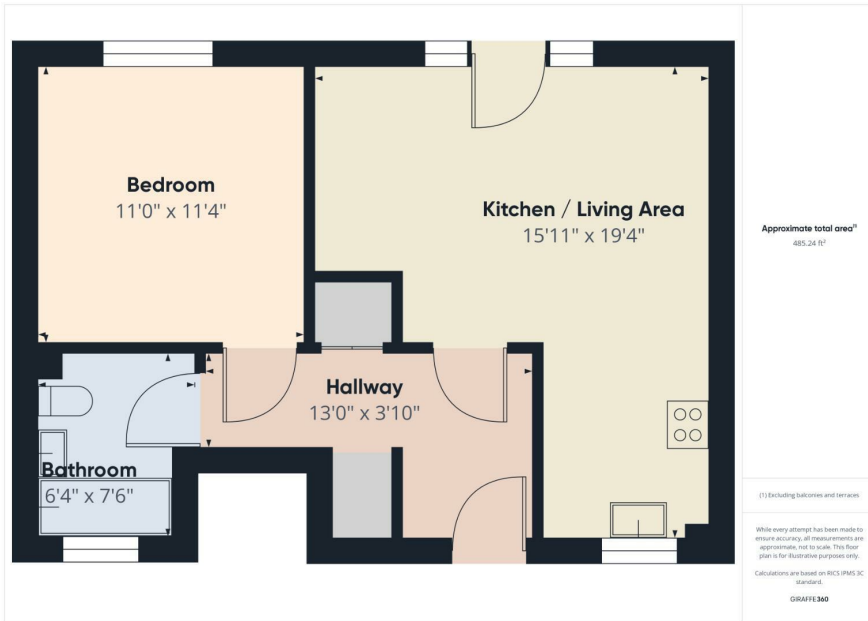
- \*\*\*PERFECT FOR FIRST TIME BUYERS\*\*\*
- \*\*\*ONE BEDROOM\*\*\*
- \*\*\*GROUND FLOOR MAISONETTE\*\*\*
- \*\*\*PRIVATE GARDEN\*\*\*
- \*\*\*REAR PEDESTRIAN ACCESS\*\*\*
- \*\*\*OFF STREET PARKING\*\*\*

### Viewing

Please contact our Griffin Residential Elm Park Office on 01708 320600 if you wish to arrange a viewing appointment for this property or require further information.



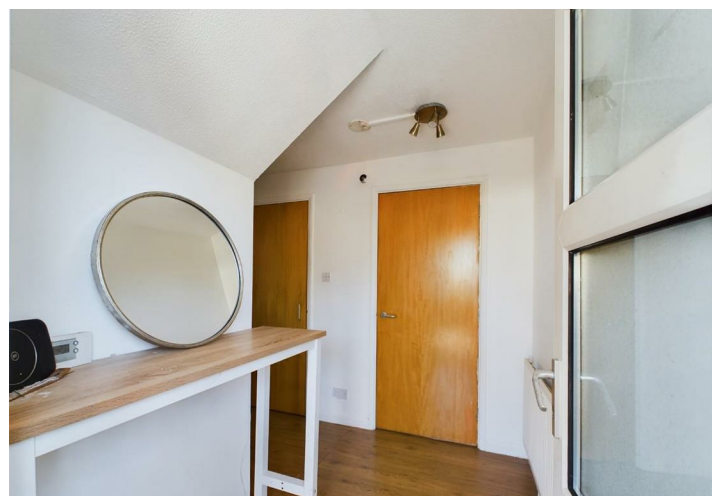
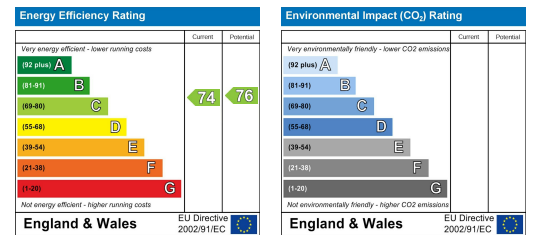
## Floor Plan



## Area Map



## Energy Efficiency Graph



These particulars, whilst believed to be accurate are set out as a general outline only for guidance and do not constitute any part of an offer or contract. Intending purchasers should not rely on them as statements of representation of fact, but must satisfy themselves by inspection or otherwise as to their accuracy. No person in this firm's employment has the authority to make or give any representation or warranty in respect of the property.