



GRIFFIN

THE PROPERTY PEOPLE



Ryder Gardens

, Rainham, RM13 7LS

Offers in excess of £475,000

CALL TO BOOK YOUR APPOINTMENT

Griffin have pleasure in offering for sale this 3 bedroom semi detached home which has scope for extending (subject to planning). Externally the property has off street parking for multiple cars and the garden is a good size which could (subject to planning) be used for development. The garden also has a feature fish pond and two sheds. It is a mature garden which is mainly laid to lawn and has flower and fruit tree borders. As you enter the front door there is a good size hallway with doors leading to a through lounge and dining area, a further door from the hallway leads to the kitchen which has plenty of storage and a further dining area with patio doors leading out to the garden. On the first floor are three bedrooms with the master bedroom being at the front of the house and a family bathroom.

Do not hesitate to contact the GRIFFIN SALES TEAM to arrange your viewing.

Viewing

Please contact our Griffin Residential Elm Park Office on 01708 320600 if you wish to arrange a viewing appointment for this property or require further information.

- FAMILY HOME
- POTENTIAL FOR BUILDING/EXTENDING (STPP)
- THREE BEDROOMS
- SEMI DETACHED
- EXTENDED TO THE GROUND FLOOR
- OFF STREET PARKING FOR MULTIPLE CARS
- GOOD SIZE GARDEN
- VIEWINGS A MUST



3



1



1



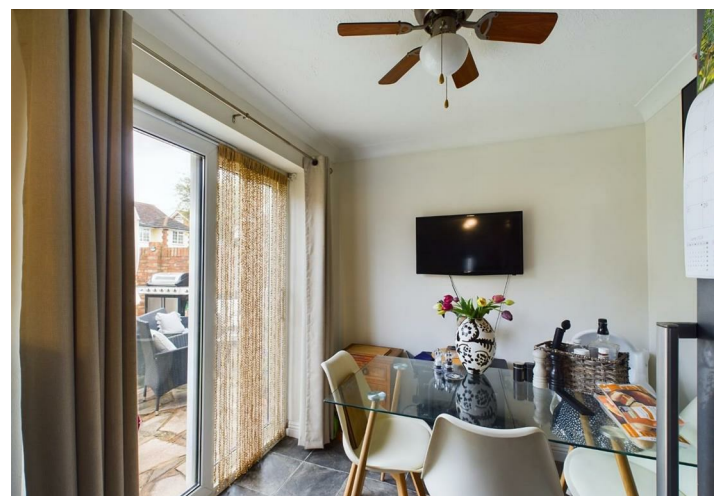
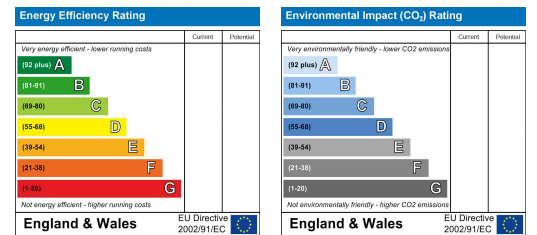
Floor Plan



Area Map



Energy Efficiency Graph



These particulars, whilst believed to be accurate are set out as a general outline only for guidance and do not constitute any part of an offer or contract. Intending purchasers should not rely on them as statements of representation of fact, but must satisfy themselves by inspection or otherwise as to their accuracy. No person in this firm's employment has the authority to make or give any representation or warranty in respect of the property.