



GRIFFIN

THE PROPERTY PEOPLE



Wood Lane

, Dagenham, RM9 5SS

Guide price £375,000

GUIDE PRICE £375,000 - £400,000

This two bedroom currently used as a three bedroom terraced house, which was originally constructed as a two bedroom is available to view on the open house. Situated within a 'banjo' walkway, it is 1 mile to Dagenham Heathway District line station and 1 mile of Becontree District line station. With bus routes and links to the arterial roads i.e. A13 and A127, transportation is ample. To the ground floor is open plan living and to the first floor are the bedrooms and family bathroom. The rear garden is approx. 80'. An ideal first purchase do not miss out on this property - call the Griffin Elm Park Sales Team to arrange your viewing.

Viewing

Please contact our Griffin Residential Elm Park Office on 01708 320600 if you wish to arrange a viewing appointment for this property or require further information.



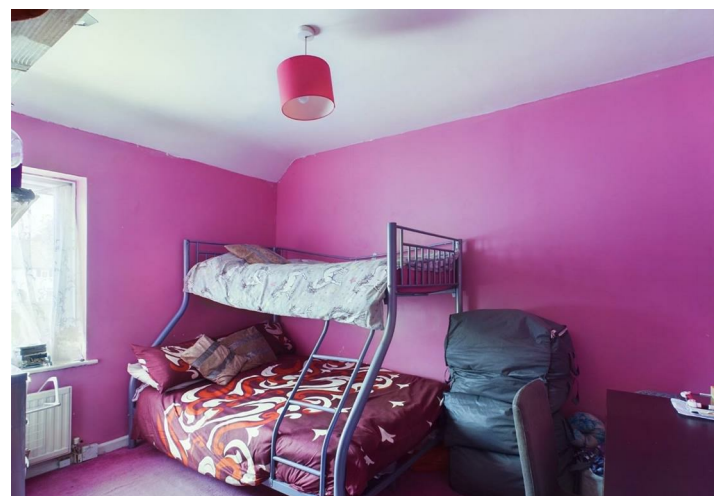
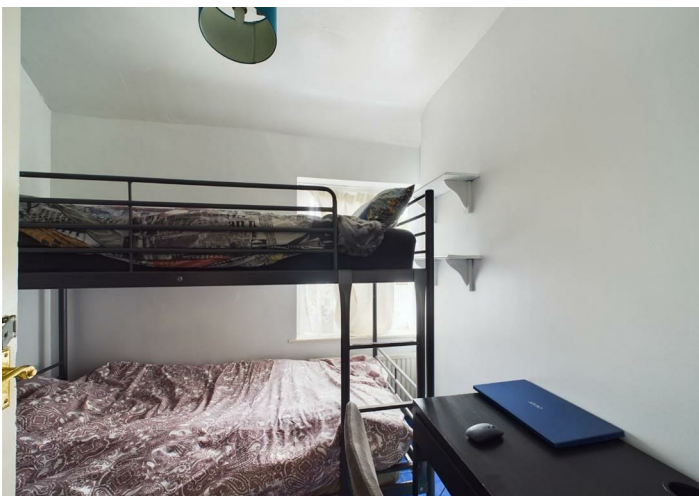
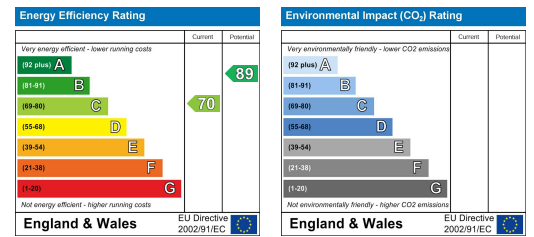
Floor Plan



Area Map



Energy Efficiency Graph



These particulars, whilst believed to be accurate are set out as a general outline only for guidance and do not constitute any part of an offer or contract. Intending purchasers should not rely on them as statements of representation of fact, but must satisfy themselves by inspection or otherwise as to their accuracy. No person in this firm's employment has the authority to make or give any representation or warranty in respect of the property.