



# GRIFFIN

THE PROPERTY PEOPLE



## Lakefields Close , Rainham, RM13 9SL

Guide price £375,000

\*\*\*MOVE STRAIGHT IN\*\*\*

\*\*\*GUIDE PRICE OF £375,000-£400,000\*\*\*

We at Griffin are pleased to bring to the market this fully refurbished 2 bedroom semi-detached bungalow. The property has been finished to a very high standard, that is all ready for you to move in. The property is located on a very sought-after road in Rainham, so please call to arrange your viewing. The property benefits from private side access to a detached garage in the garden, with off street parking to the front. The property has been refurbished throughout with new wooden flooring, three piece bathroom suite, modern fitted kitchen, single storey extension to the rear, good size garden with a fully boarded loft. The property offers further potential STPP, to grow with your family.

- CHAIN FREE
- REFURBISHED THROUGHOUT
- MOVE STRAIGHT IN
- DETACHED GARAGE
- SIDE ACCESS
- POTENTIAL TO EXTEND STPP
- GUIDE PRICE OF £375,000-£400,000

### Viewing

Please contact our Griffin Residential Elm Park Office on 01708 320600 if you wish to arrange a viewing appointment for this property or require further information.



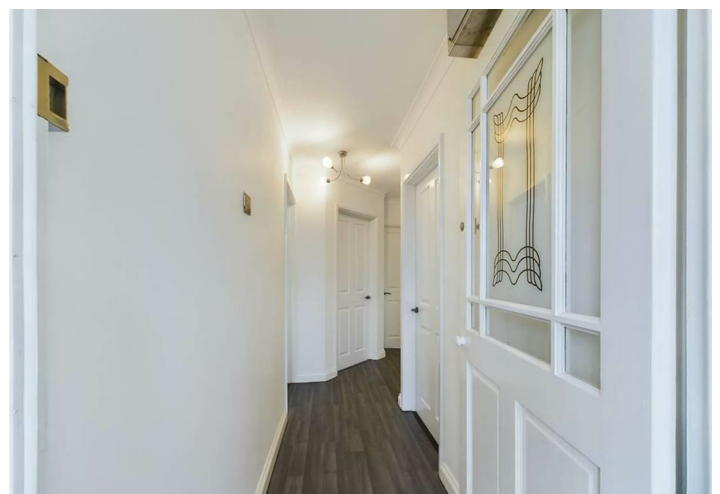
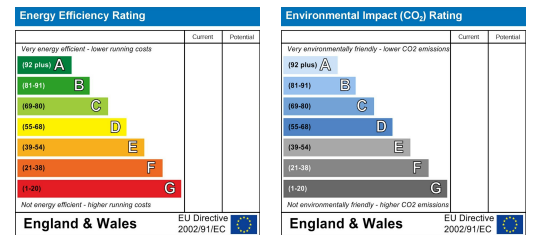
## Floor Plan



## Area Map



## Energy Efficiency Graph



These particulars, whilst believed to be accurate are set out as a general outline only for guidance and do not constitute any part of an offer or contract. Intending purchasers should not rely on them as statements of representation of fact, but must satisfy themselves by inspection or otherwise as to their accuracy. No person in this firm's employment has the authority to make or give any representation or warranty in respect of the property.