



GRIFFIN

THE PROPERTY PEOPLE



Exmouth Road
, Welling, DA16 1EB

Offers in excess of £450,000

COMPLETE CHAIN

BLOCK VIEWING SATURDAY 27TH APRIL

We at Griffin are pleased to bring to the market this 3 bedroom semi-detached house on Exmouth Road, Welling. This property is a bay fronted 'Stevens' style family home and is surrounded by Townley Grammar School, Beths Grammar School and Bexley Grammar School. The property is located just over a mile from Welling Train Station, Bexleyheath Train Station and Abbey Wood Train Station on the Elizabeth Line. You are a short drive to Danson Park that has a boating/fishing lake, sports facilities and not to forget the historic Georgian mansion Danson House. This family home benefits from a bright and airy hallway leading to the lounge with the beautiful bay window adding character to the room. The dining area overlooks the garden and leads onto the galley kitchen. The garden has side access via the metal gate perfect for bikes and scooters. Upstairs you have 3 bedrooms, family bathroom and loft access. Please call to book your viewing.

- COMPLETE CHAIN
- SEMI-DETACHED HOUSE
- OFF STREET PARKING
- SURROUNDED BY GRAMMAR SCHOOLS
- ELIZABETH LINE JUST OVER 1 MILE FROM THE PROPERTY
- VIEWING IS A MUST
- CALL TO BOOK YOUR VIEWING
- PERFECT FAMILY HOME

Viewing

Please contact our Griffin Residential Elm Park Office on 01708 320600 if you wish to arrange a viewing appointment for this property or require further information.



3



1



1



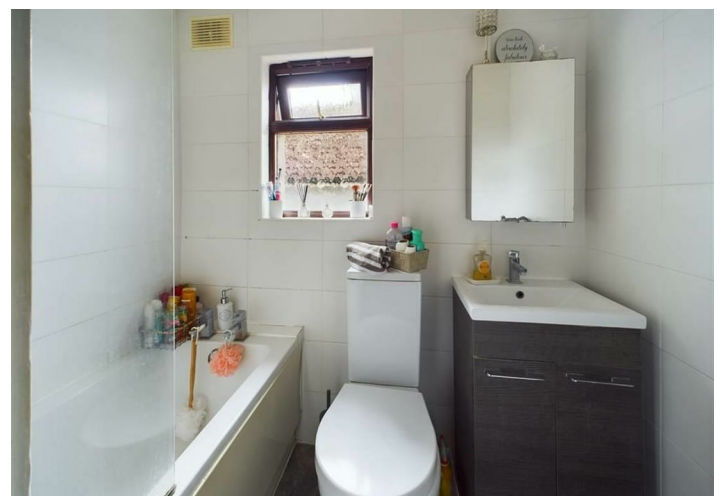
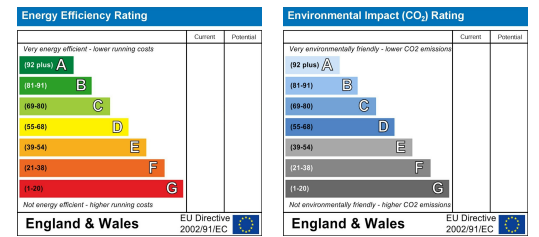
Floor Plan



Area Map



Energy Efficiency Graph



These particulars, whilst believed to be accurate are set out as a general outline only for guidance and do not constitute any part of an offer or contract. Intending purchasers should not rely on them as statements of representation of fact, but must satisfy themselves by inspection or otherwise as to their accuracy. No person in this firm's employment has the authority to make or give any representation or warranty in respect of the property.