



# GRIFFIN

THE PROPERTY PEOPLE



## Lovell Walk , Rainham, RM13 7ND

Guide price £525,000

\*\*\*BOOK YOUR APPOINTMENT NOW\*\*\*

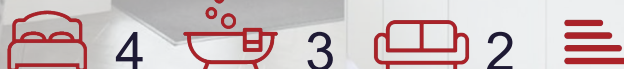
GUIDE PRICE £525,000 - £550,000

Coming to the market this weekend is this 4 bedroom semi detached property which is waiting for it's new family to write the next chapter. As you enter the hallway there are doors leading to the front reception room and a kitchen/diner with a further reception area. The kitchen has recently been replaced with high spec units, with an island and a quartz work surface, and Amtico flooring. There are French doors leading to the garden, with a patio area and the remainder laid to lawn with flower borders. To the rear of the garage is a secluded patio area where you can seek that quiet moment. To the first floor are two double bedrooms and the fourth bedroom, which is currently being used as an office. The family bathroom is also on the first floor. The top floor is the master bedroom, that has eaves storage and an ensuite shower room. To the front of the property there is plenty of off street parking and access to a garage and the garden...this house is one not to miss. Call the Griffin Sales Team in Elm Park to arrange your viewing.

- FOUR BEDROOMS
- SEMI DETACHED
- HIGH SPEC KITCHEN/QUARTZ WORK SURFACES
- TWO RECEPTIONS
- GROUND FLOOR WC
- FIRST FLOOR FAMILY BATHROOM
- EN-SUITE TO MASTER BEDROOM
- OFF STREET PARKING

### Viewing

Please contact our Griffin Residential Elm Park Office on 01708 320600 if you wish to arrange a viewing appointment for this property or require further information.





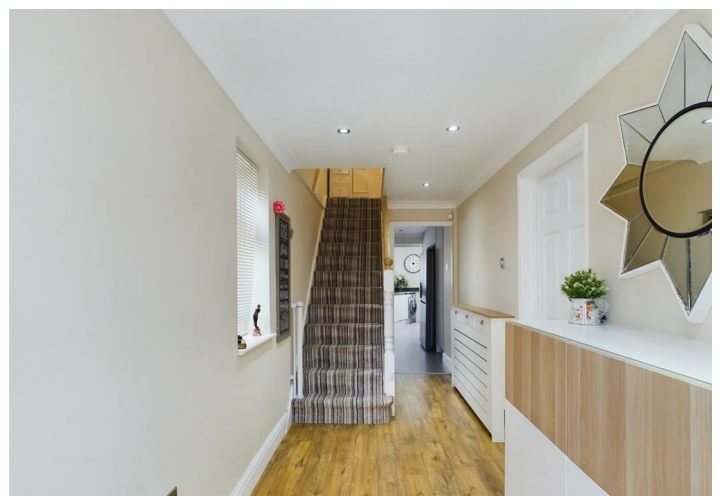
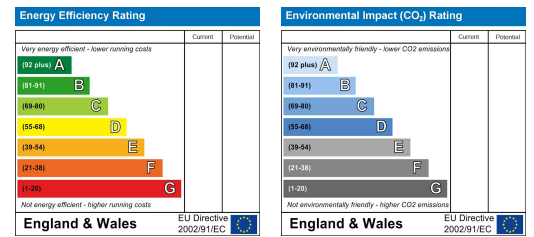
# Floor Plan



# Area Map



# Energy Efficiency Graph



These particulars, whilst believed to be accurate are set out as a general outline only for guidance and do not constitute any part of an offer or contract. Intending purchasers should not rely on them as statements of representation of fact, but must satisfy themselves by inspection or otherwise as to their accuracy. No person in this firm's employment has the authority to make or give any representation or warranty in respect of the property.