



# GRIFFIN

THE PROPERTY PEOPLE



## Blake Close , Rainham, RM13 8BE

### Offers in excess of £400,000

\*\*\*MOVE STRAIGHT IN\*\*\*

\*\*\*OPEN HOUSE SATURDAY 13TH APRIL\*\*\*

We at Griffin are pleased to bring to the market this 3 bedroom end of terrace house. If you are looking for a property to just move into, then look no more. The property is located within walking distance to schools, local shops and 0.9 miles to Rainham Station on the C2C line. You have off street parking but you also benefit from having a garage nearby. You enter the property into a large bright hallway leading to the very stylish fully fitted kitchen. This property has been extended to the rear so the lounge/diner is perfect for family time, entertaining and your growing family. You have bi-folding doors leading to the low maintenance garden with an office/storage/summer house to the rear. You have side access perfect to avoid bring bikes and scooters through the house. On the first floor you have a very modern 4 piece bathroom suite that is larger than average. You then have two double bedrooms and a single, there is loft access great for storage. Please call the office to arrange your viewing here.

- MOVE STRAIGHT IN
- VIEWING IS A MUST
- OFF STREET PARKING
- GARAGE IN BLOCK
- EXTENDED TO THE REAR
- BI-FOLDING DOORS OVER LOOKING THE GARDEN
- 0.9 MILES TO RAINHAM STATION

### Viewing

Please contact our Griffin Residential Elm Park Office on 01708 320600 if you wish to arrange a viewing appointment for this property or require further information.



3



1



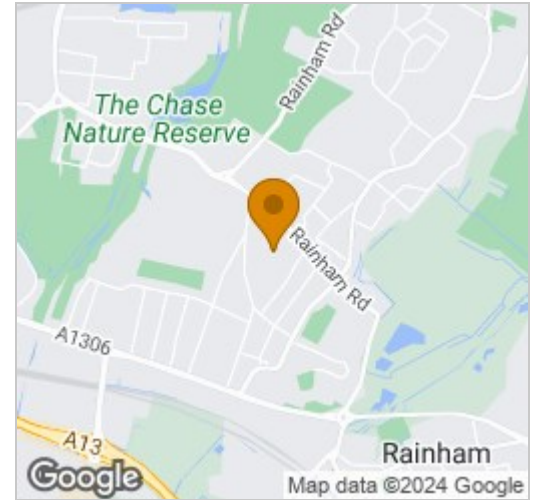
1



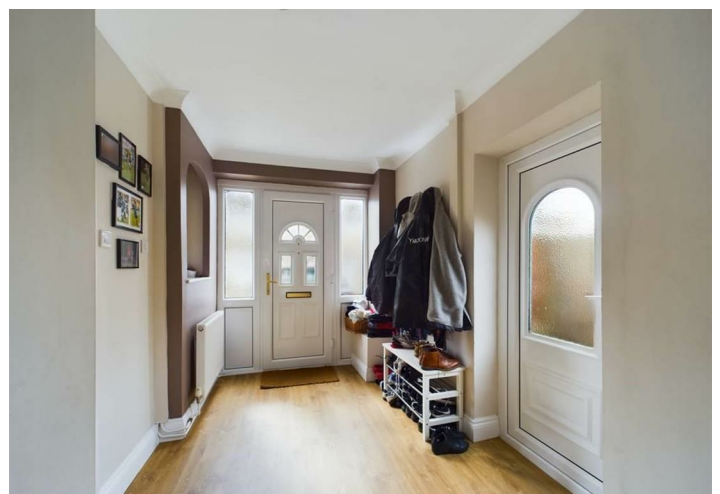
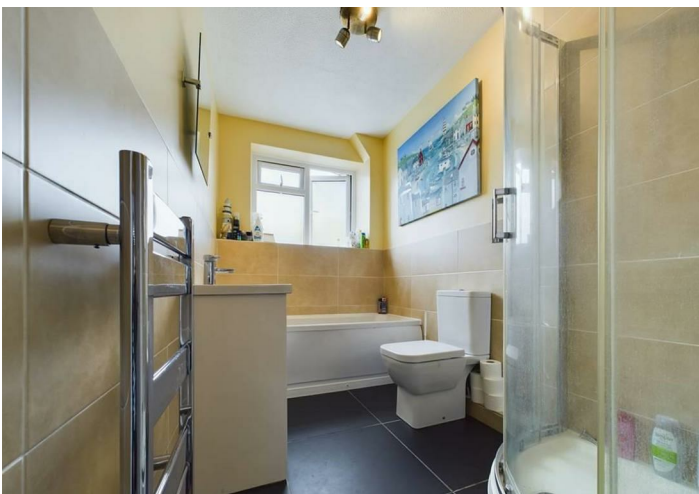
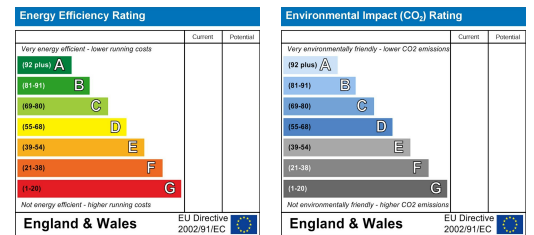
## Floor Plan



## Area Map



## Energy Efficiency Graph



These particulars, whilst believed to be accurate are set out as a general outline only for guidance and do not constitute any part of an offer or contract. Intending purchasers should not rely on them as statements of representation of fact, but must satisfy themselves by inspection or otherwise as to their accuracy. No person in this firm's employment has the authority to make or give any representation or warranty in respect of the property.