



# GRIFFIN

THE PROPERTY PEOPLE



## Rosebank Avenue , Hornchurch, RM12 5QS

Guide price £375,000

\*\*\*OPEN HOUSE - 25TH MAY\*\*\* \*\*\*CALL TO ARRANGE YOUR APPOINTMENT\*\*\*

Offered with NO ONWARD CHAIN is this three bedroom terraced property which is in need of modernisation. It has been a good family home and it is waiting for it's next occupants to enjoy the house and what the area has to offer. This home is placed within good primary and secondary schools catchment areas. Transport links are in abundance, Elm Park Underground station, bus routes to Romford, Hornchurch, Rainham, Dagenham and Lakeside and the A13, A127, M25 are the arterial roads nearby. Do not hesitate to contact Griffin Elm Park Sales Team to arrange your appointment.

### Viewing

Please contact our Griffin Residential Elm Park Office on 01708 320600 if you wish to arrange a viewing appointment for this property or require further information.



3



1



2



D

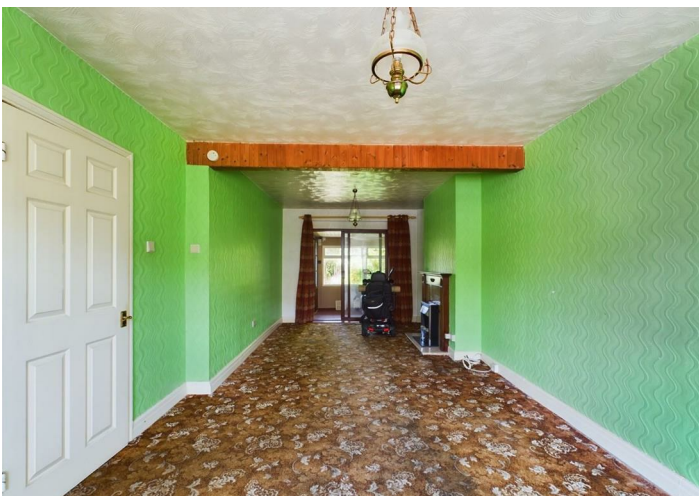
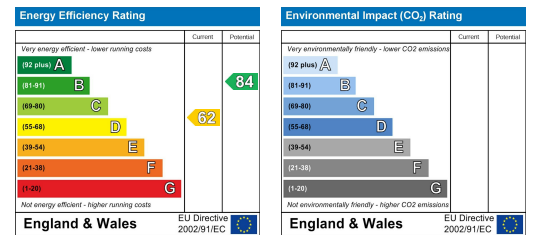
## Floor Plan



## Area Map



## Energy Efficiency Graph



These particulars, whilst believed to be accurate are set out as a general outline only for guidance and do not constitute any part of an offer or contract. Intending purchasers should not rely on them as statements of representation of fact, but must satisfy themselves by inspection or otherwise as to their accuracy. No person in this firm's employment has the authority to make or give any representation or warranty in respect of the property.