



GRIFFIN

THE PROPERTY PEOPLE



Darcy Gardens , Dagenham, RM9 6BS

Guide price £540,000

CHAIN FREE

Guide price of £540,000-£580,000

Griffin are pleased to bring to the market this 4 bedroom, 2 receptions, 3 bathrooms end of terrace house. This property offers your growing family the space needed to enjoy family time. The property is located in a quiet cul-de-sac and is a short walk from Goresbrook Park Adventure Trail, Dagenham Heathway Underground Station and the A13. The property benefits from being finished to a high standard and has spacious rooms throughout. The hallway is bright and inviting, with reception 2 to your right, reception 1 to your left then onto the W/C. Reception 1 leads onto the dining area, overlooking the fully fitted kitchen that is perfect for entertaining. The property also offers a low maintenance garden. The first floor has 3 double bedrooms, the master has a large and spacious en-suite. Bedroom 4 is also a double and is located on the 3rd floor. The property is gated to the front and offers parking for 3/4 cars. This is a property that you need to view to appreciate the size and finish.

- NO CHAIN
- CALL TO BOOK YOUR VIEWING
- OPEN PLAN KITCHEN/DINER/LOUNGE
- FAMILY BATHROOM
- EN-SUITE TO THE MASTER BEDROOM
- FOUR DOUBLE BEDROOMS
- TWO RECEPTIONS
- OFF STREET PARKING

Viewing

Please contact our Griffin Residential Elm Park Office on 01708 320600 if you wish to arrange a viewing appointment for this property or require further information.



4



3



2



E



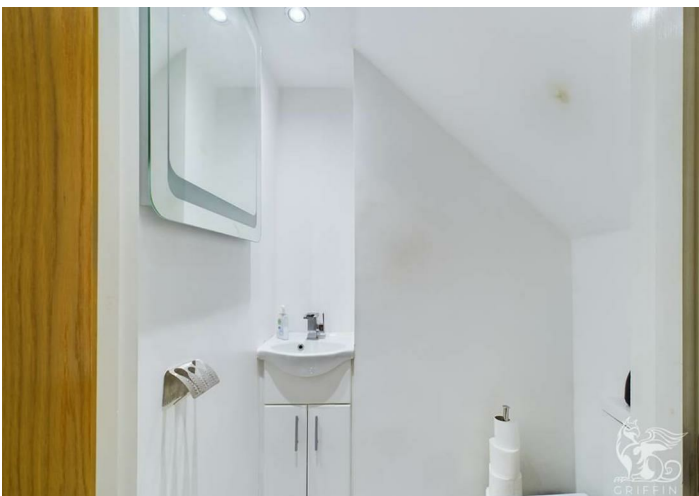
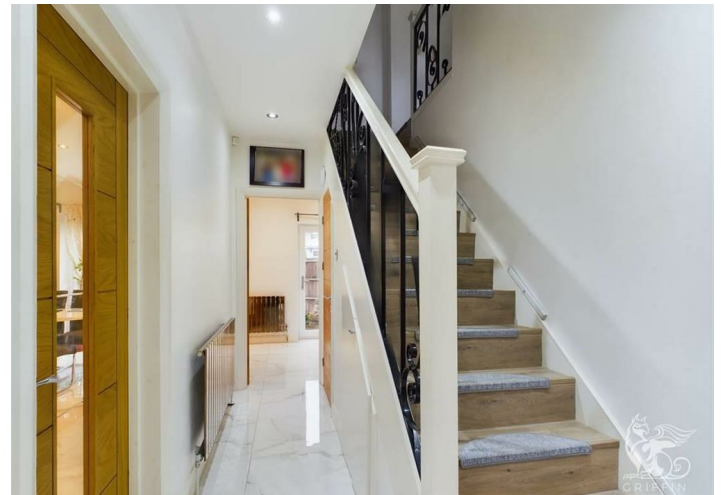
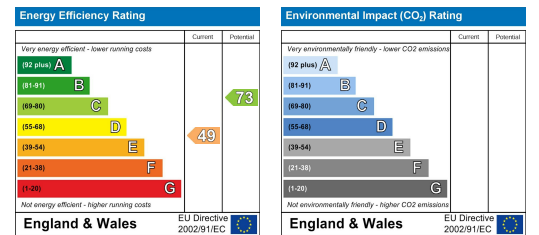
Floor Plan



Area Map



Energy Efficiency Graph



These particulars, whilst believed to be accurate are set out as a general outline only for guidance and do not constitute any part of an offer or contract. Intending purchasers should not rely on them as statements of representation of fact, but must satisfy themselves by inspection or otherwise as to their accuracy. No person in this firm's employment has the authority to make or give any representation or warranty in respect of the property.