



# GRIFFIN

THE PROPERTY PEOPLE



## Suttons Lane Hornchurch, RM12 6RS

### Guide price £300,000

\*\*\*\* GUIDE PRICE £300,000- £350,000 \*\*\*\*

THE DAHILA IS A STUNNING COLLECTION OF ONE BEDROOM APARTMENTS FORMING PART OF THE NEW ST GEORGE'S' DEVELOPMENT IN HORNCHURCH.

PROUDLY BROUGHT TO YOU BY GRIFFIN NEW HOMES IN PARTNERSHIP WITH BELLWAY LONDON

This home is sold with a 999 year lease, reducing by the number of months which have passed between the first legal completion of an apartment on the development and the legal completion of your plot. The ground rent is Peppercorn and the council tax band is TBC.

Living at St George's Park

These homes are ideally located in the stunning suburban town of Hornchurch, just a 10 minutes' walk to Hornchurch tube station. Plus, you can make the most of the retail and dining at your fingertips, located just a 20 minutes' drive away at Lakeside Shopping Centre.

Hornchurch and Romford offer a range of restaurants, cafés and traditional pubs. A 16-screen cinema and a bowling

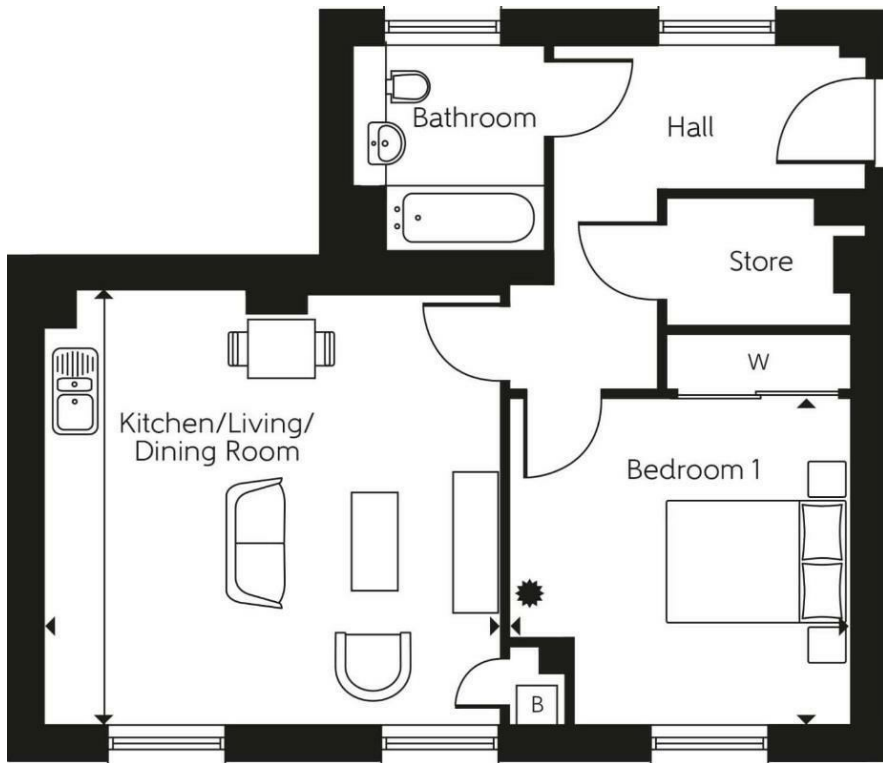
- NO STAMP DUTY TO PAY ON THE FIRST £250,000 OF THIS HOME
- Fitted wardrobe
- Flooring throughout
- Allocated parking plus visitor parking
- Selection of fridge, freezer, oven and integrated hob included
- Located a short walk to Hornchurch station
- First time buyers pay no stamp duty upto to £425,000
- National house builder

### Viewing

Please contact our Griffin Residential Elm Park Office on 01708 320600 if you wish to arrange a viewing appointment for this property or require further information.



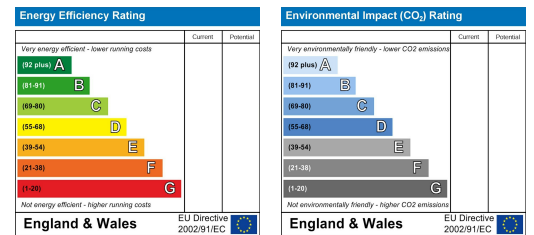
## Floor Plan



## Area Map



## Energy Efficiency Graph



These particulars, whilst believed to be accurate are set out as a general outline only for guidance and do not constitute any part of an offer or contract. Intending purchasers should not rely on them as statements of representation of fact, but must satisfy themselves by inspection or otherwise as to their accuracy. No person in this firm's employment has the authority to make or give any representation or warranty in respect of the property.