
KINGS LANGLEY ESTATES

S A L E S & L E T T I N G S

NEWBURY MEWS, LONDON, NW5 3HP

WWW.KINGSLANGLEYESTATES.CO.UK

Kings Langley Estates are delighted to offer this well presented two bedroom modern mews house within a gated development within easy access to local amenities.

The accommodation spans over two floors and comprises: open plan kitchen/living room, cloakroom, first floor landing, two double bedrooms and a private south facing balcony.

Newbury Mews is a located within close proximity of Kentish Town West Overground station, Chalk Farm Underground station, and is only a short walk to the open green spaces of Hampstead Heath and Parliament Hill Fields.

Viewings come strongly advised by an appointment only basis.

Virtual Tour:

<https://view.ricoh360.com/def34b4d-5265-43b0-80c1-68b3002817ef>

Video:

<https://vimeo.com/1078410586?share=copy#t=0>

KINGS LANGLEY
ESTATES
SALES & LETTINGS

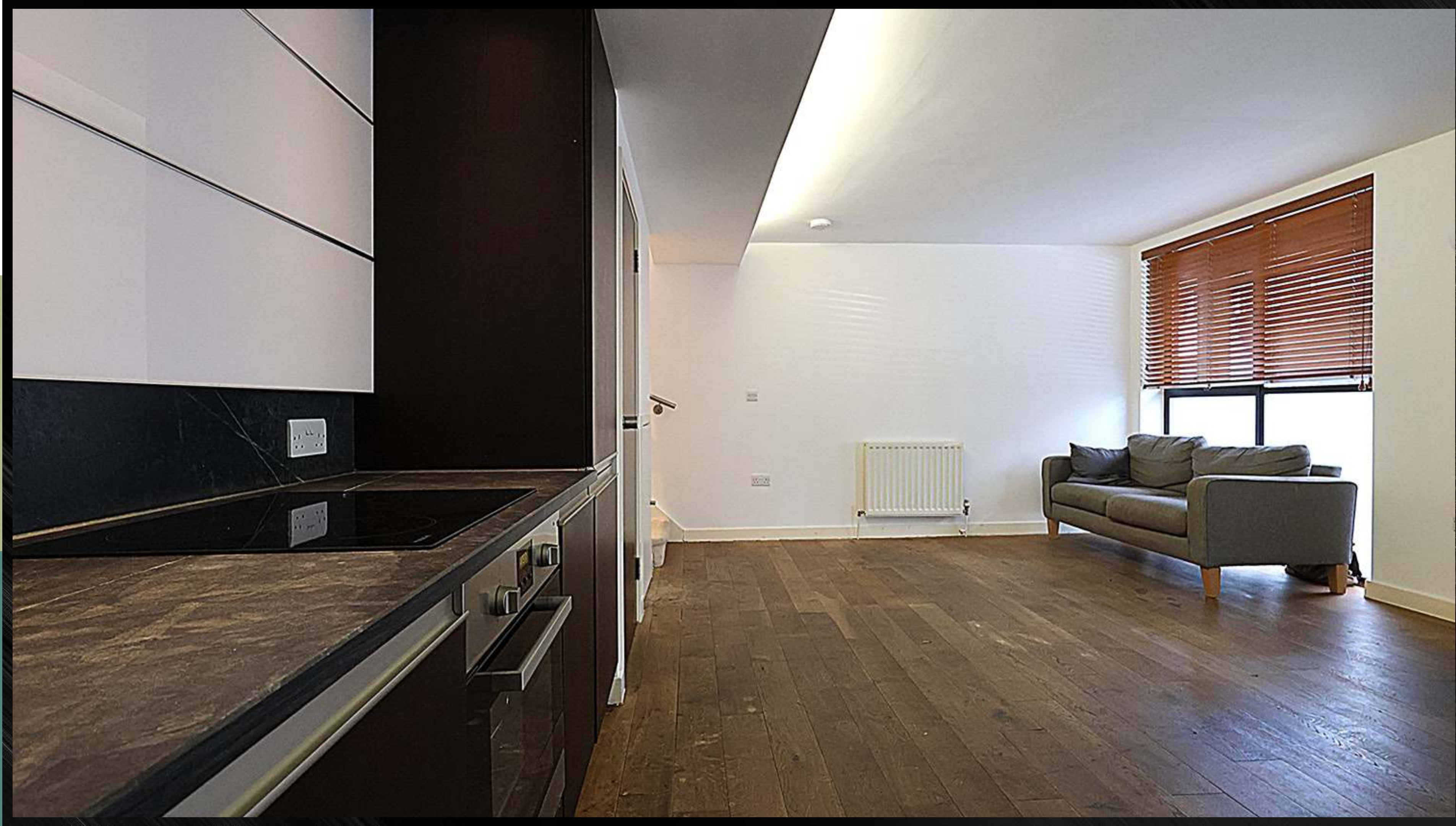


14





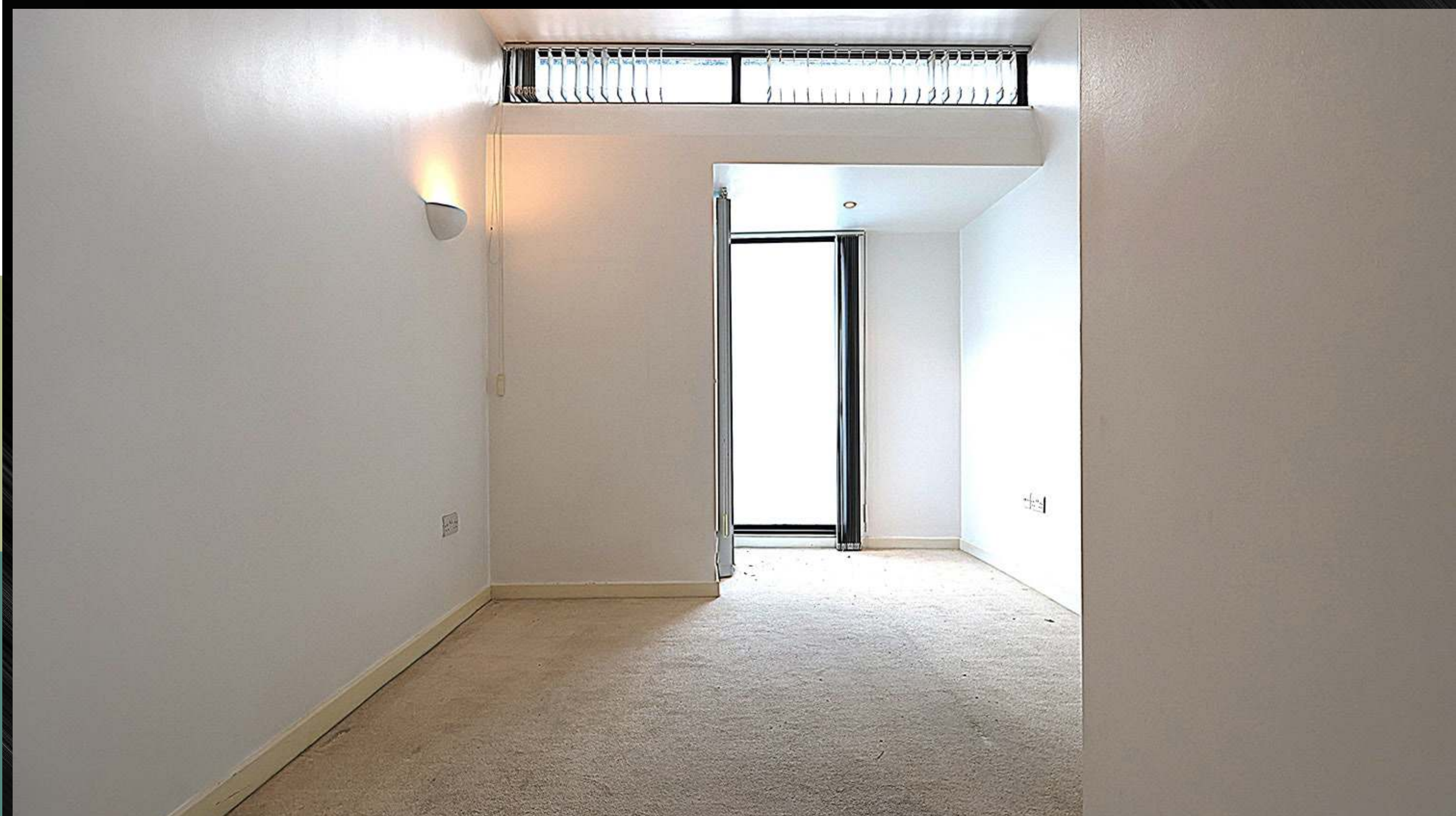


















“My company was established in the Village in 2019. From the hard work & founding principles then - and both aspects have very much remained true to today - we quickly grew to become an award winning company in the local area. Our record in consistently handling the selling & Letting of properties brought to the market has been particularly impressive with a consistency demonstrable track record.”

D Freeman
DAVID FREEMAN
DIRECTOR



LOCAL LONDON BOROUGH OF CAMDEN

COUNCIL TAX: BAND F

EPC RATING: C

VIEWINGS BY AN APPOINTMENT ONLY

PRICE UPON APPLICATION



Kings House Business Centre, Home Park Estate, Station Road, Kings Langley, WD4 8LZ

Tel: 01923 947373

kingslangleyestates.co.uk

Kings Langley Estates wishes to inform prospective buyers and tenants that these particulars are a guide and act as information only. All our details are given in good faith and believed to be correct at the time of printing but they don't form part of an offer or contract. No employee of the company has authority to make or give and representation or warranty in relation to this property. All fixtures and fittings, whether fitted or not are deemed removable by the vendor unless stated otherwise and room sizes are measured between internal wall surfaces, including furnishings.