

2 Oriel Way, Barnsley, S71 2JF

Stunning 3 Bedroomed Semi-Detached Dormer Bungalow in the popular residential area of Monk Bretton

Sitting in a highly sought-after location, this charming 3 bedroomed semi-detached dormer bungalow is a dream come true for prospective homeowners. Situated on an enviable corner plot, this property offers immense potential for further development or personalization to suit your lifestyle. The property benefits from a brand new central heating system.

Modern and Stylish Features

Kitchen and Bathroom Updates: The kitchen and bathroom have both been tastefully modernized, just a year ago, providing a fresh and contemporary feel to the home.

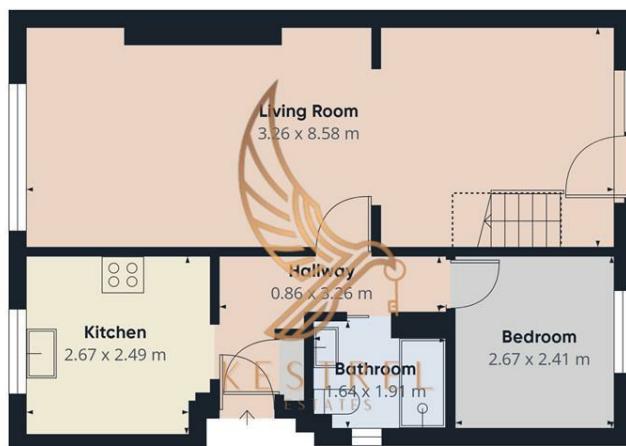
Open Plan Living: Experience the luxury of open plan living with a spacious kitchen and living area that is perfect for entertaining guests or enjoying family time.

Exceptional Living Space

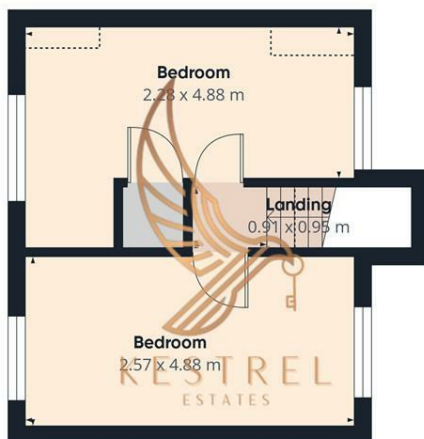
Spacious Accommodation: The property boasts generous accommodation throughout, ensuring ample space for

- 3 Bedroomed Semi Detached Dormer Bungalow
- Envious Corner Plot with huge potential
- Kitchen and Bathroom only a year old
- Spacious Accommodation Throughout
- Open Plan Living/Kitchen
- Parking for Numerous Vehicles
- NO CHAIN

£210,000



Floor 0



Floor 1



Approximate total area¹⁾
75.8 m²

Reduced headroom
2.1 m²

(1) Excluding balconies and terraces

Reduced headroom
Below 1.5 m

Calculations reference the RICS IPMS 3C standard. Measurements are approximate and not to scale. This floor plan is intended for illustration only.

GIRAFFE360

