



14 Wales Street, Pontefract, WF8 4TF

Welcome to this stunning detached house located on Wales Street in the charming town of Pontefract. This new build property, completed in 2020, offers a modern living experience with a generous space of 1,076 square feet.

As you enter, you will find a well-designed reception room that provides a warm and inviting atmosphere, perfect for both relaxation and entertaining. The house boasts four spacious bedrooms, including three doubles, ensuring ample space for family and guests. The master bedroom features an en suite bathroom, adding a touch of luxury to your daily routine.

The property is situated in a sought-after estate, conveniently close to local amenities and transport links, making it an ideal choice for families and commuters alike. The landscaped garden, accessible through bi-fold doors, creates a seamless connection between indoor and outdoor living, perfect for enjoying sunny days and hosting gatherings.

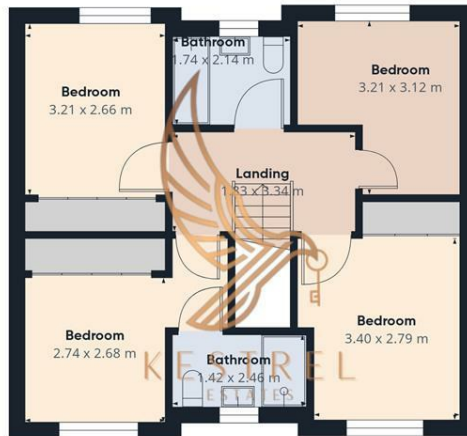
Parking is a breeze with space for multiple vehicles, including an integral garage, providing both convenience and security. This home is not just a place to live; it is a lifestyle choice that combines modern comforts with a prime location.

- 4 BED DETACHED HOME ON SOUGHT AFTER ESTATE
- 3 DOUBLES + MASTER WITH EN SUITE
- BI FOLDS LEADING TO LANDSCAPED GARDEN
- CLOSE TO LOCAL AMENITIES + TRANSPORT LINKS
- OFF ROAD PARKING + INTEGRAL GARAGE
- OPEN PLAN KITCHEN, LIVING ROOM
- UTILITY ROOM + DOWNSTAIRS WC

£340,000



Floor 0



Floor 1



Approximate total area¹⁾
111.7 m²

Reduced headroom
1.1 m²

(1) Excluding balconies and terraces

Reduced headroom
Below 1.5 m

Calculations reference the RICS IPMS 3C standard. Measurements are approximate and not to scale. This floor plan is intended for illustration only.

GIRAFFE360

