

37 Princes Drive, Pontefract, WF8 4SP

DO NOT MISS THIS PROPERTY IT WON'T BE AROUND FOR LONG

Situated on the charming Princes Drive in Pontefract, this stunning detached house offers a perfect blend of modern living and spacious comfort. Built in 2017, the property boasts a generous 1,313 square feet of well-designed space, making it an ideal family home.

Upon entering, you are greeted by a welcoming sweeping staircase, a wonderful reception room that sets the tone for the rest of the house. The property features four double bedrooms, providing ample space for family members or guests. The two bathrooms are thoughtfully designed, ensuring convenience and privacy for all.

One of the standout features of this home is the large garden room, which invites natural light and offers a versatile space for relaxation or entertaining. The beautifully landscaped garden complements the property, providing a serene outdoor retreat for those sunny days or quiet evenings.

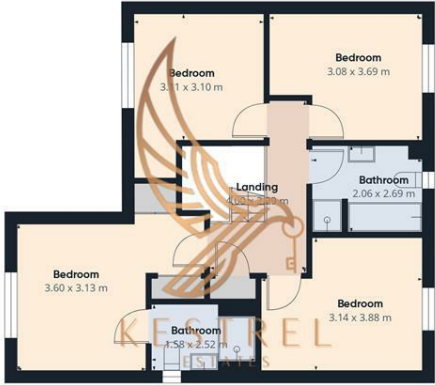
For those seeking ownership, this property can be purchased as freehold, offering the security and freedom that comes with owning your own home. With its modern amenities and spacious layout, this house on Princes Drive is a wonderful opportunity for anyone looking to settle in a desirable area of Pontefract. Don't miss the chance to make this delightful property your own.

- STUNNING 4 BED DETACHED HOME
- LARGE GARDEN ROOM
- CAN BE BOUGHT AS FREEHOLD
- LANDSCAPED GARDEN
- 4 DOUBLE BEDROOMS
- READY TO MOVE IN TO
- NEAR TRANSPORT LINKS
- SOUGHT AFTER LOCATION

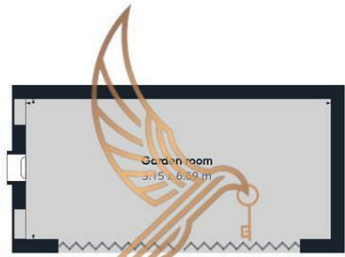
£400,000



Floor 0 Building 1



Floor 1 Building 1



Floor 0 Building 2



Approximate total area[®]
156.7 m²
Reduced headroom
0.1 m²

(1) Excluding balconies and terraces

Reduced headroom
Below 1.5 m

Calculations reference the RICS IPMS 3C standard. Measurements are approximate and not to scale. This floor plan is intended for illustration only.

GIRAFFE360

