



5 Edward Mews, Pontefract, WF8 4SR

Welcome to this stunning four-bedroom detached house located in the highly sought-after Edward Mews, Pontefract. Built in 2015, this modern property offers a generous living space of 1,420 square feet, making it an ideal family home.

As you enter, you will find three well-proportioned reception rooms, perfect for entertaining guests or enjoying quiet family time. The layout is designed to provide both comfort and functionality, with ample natural light flowing through the bifold doors that lead to the rear garden. This feature not only enhances the aesthetic appeal but also creates a seamless connection between indoor and outdoor living.

The property boasts four spacious bedrooms, providing plenty of room for family members or guests. With two well-appointed bathrooms, morning routines will be a breeze, ensuring convenience for everyone in the household.

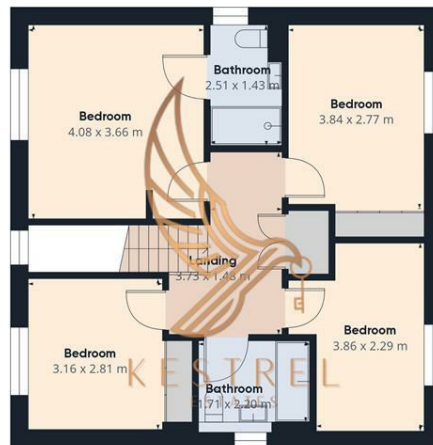
Situated in a desirable estate, this home is conveniently close to local shops, schools, and various amenities, making it an excellent choice for families and professionals alike. Additionally, the property offers parking for two vehicles, adding to the practicality of this lovely home.

- STUNNING 4 BED DETACHED PROPERTY
- SOUGHT AFTER ESTATE
- 4 DOUBLE BEDROOMS
- BI FOLD DOORS
- LARGE OPEN PLAN KITCHEN DINER
- CLOSE TO LOCAL TOWN, SHOPS AND AMENITIES

£365,000



Floor 0



Floor 1



Approximate total area[®]
144.4 m²

(1) Excluding balconies and terraces

While every attempt has been made to ensure accuracy, all measurements are approximate, not to scale. This floor plan is for illustrative purposes only.

Calculations are based on RICS IPMS 3C standard.

GIRAFFE360

