

11 Woodlands Place, Hemsworth, Pontefract, WF9 4GD

Welcome to The Marlowe. Our beautifully designed two-bedroom detached bungalow offers the perfect single-storey living experience.

Step into a spacious hallway with convenient storage, leading seamlessly into distinct living and sleeping areas. The well-planned kitchen provides ample space for a dining table, while the bright and airy lounge features double patio doors that open onto the garden. The generously sized master bedroom, along with a spacious second bedroom, ensures plenty of room for guests. Completing the home, the bathroom includes built-in storage for added practicality.

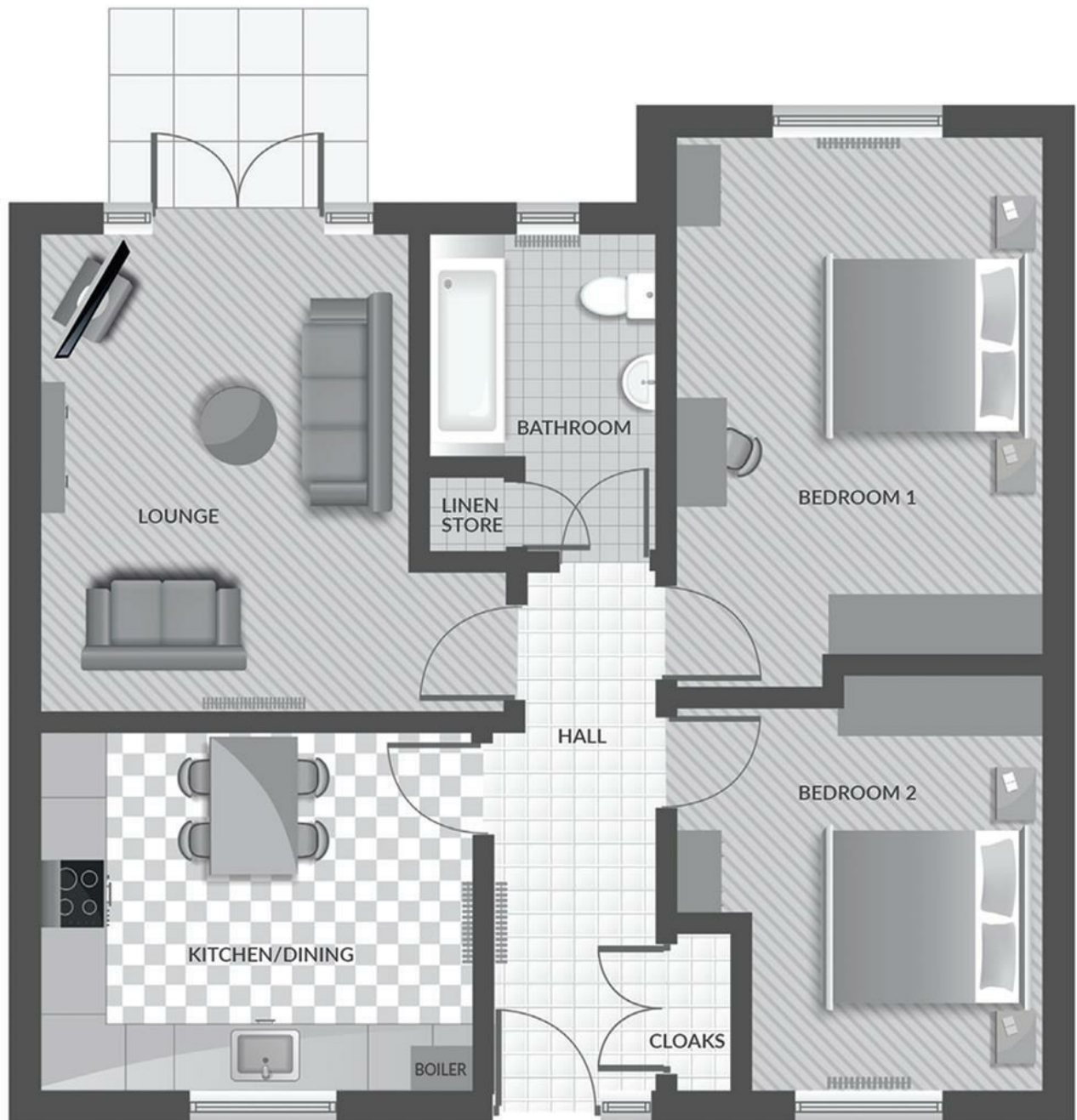
Property Features

Solar Panels
Predicted A/B EA

Visit SAUL HOMES HEAD OFFICE, Burntwood Court, Common Road, Brierley Common, Brierley, S72 9ET.

- The Marlowe
- 2 Bed Detached Bungalow
- Perfect for those wanting single story living
- Open Plan Kitchen/Diner
- Spacious Accommodation Throughout
- Solar Panels
- Great Location
- EPC Predicted A/B
- NB: Images are artists impressions

£259,000



Energy Efficiency Rating		
	Current	Potential
Very energy efficient - lower running costs		
(92 plus) A		
(81-91) B		
(69-80) C		
(55-68) D		
(39-54) E		
(21-38) F		
(1-20) G		
Not energy efficient - higher running costs		
England & Wales	EU Directive 2002/91/EC 