



7 Woodlands Place, Hemsworth, Pontefract, WF9 4GD

Stunning 4-Bedroom Detached Home in the Heart of Hemsworth – The Malherb

Welcome to The Malherb, a beautifully designed four-bedroom detached home situated in the highly sought-after Oaklands Development in Hemsworth. This elegant and spacious property offers modern living at its finest, with a thoughtfully designed layout, high-quality finishes, and a fantastic location.

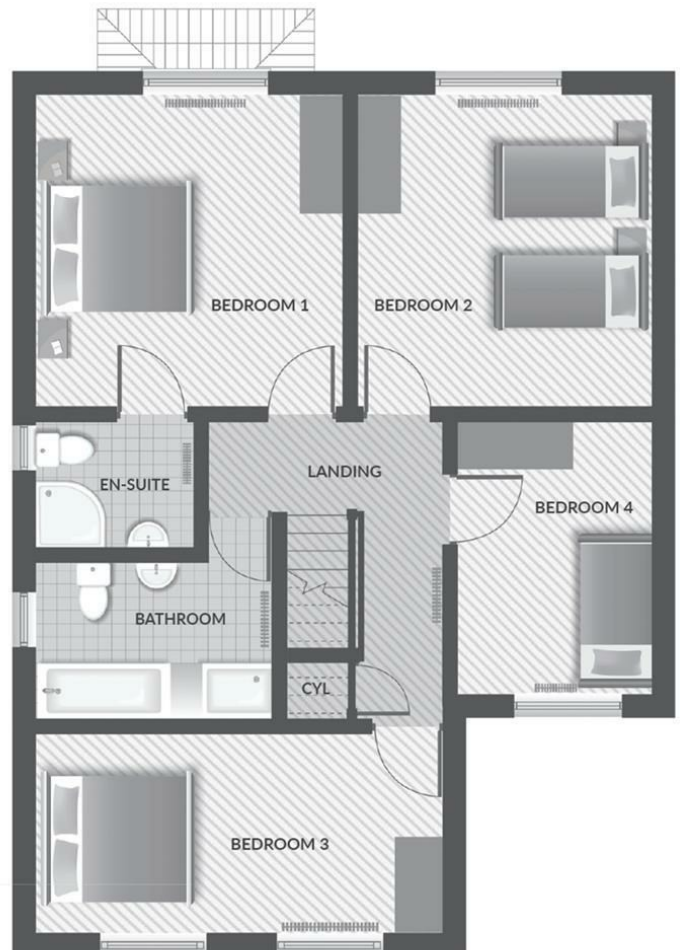
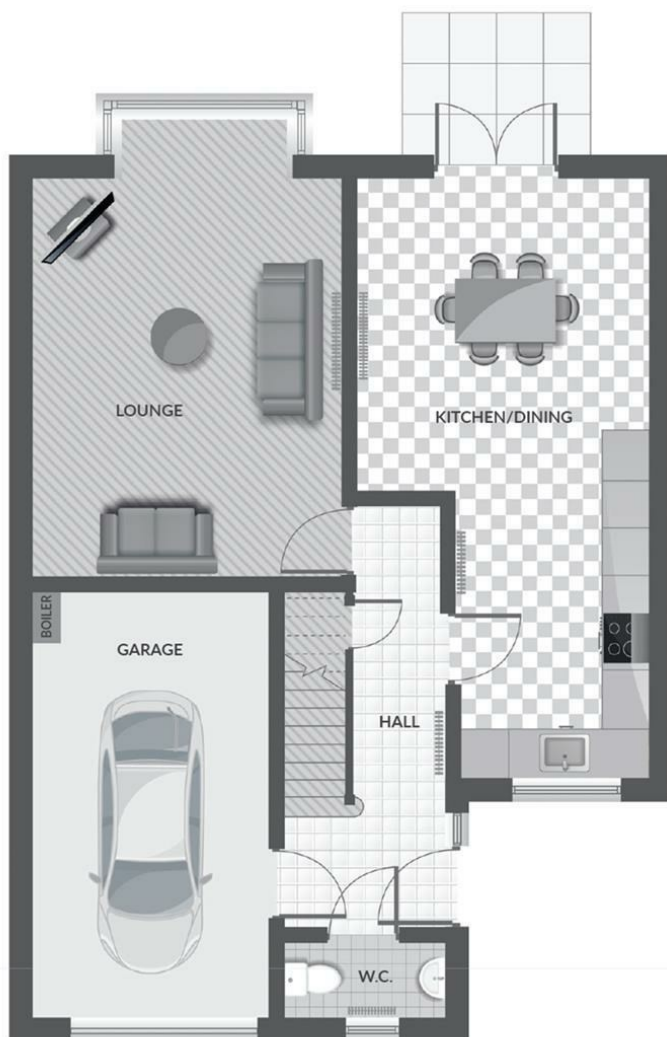
Ideal for growing families or professionals, this home boasts a bright and airy lounge with a feature bay window, an open-plan kitchen and dining area, and a luxurious master bedroom with an en-suite. With an integral garage, private driveway, and generous garden space, this home ticks all the boxes for comfortable and stylish living.

Nestled in a thriving community, The Malherb offers easy access to local schools, shops, parks, and excellent transport links, making it the perfect place to call home. Don't miss your chance to own this stunning property – enquire today!

Visit SAUL HOMES HEAD OFFICE, Burntwood Court, Common Road, Brierley Common, Brierley, S72 9ET.

- The Malherb
- 4 Bed Detached Home
- Perfect for Families & Professionals
- Spacious Kitchen/Diner
- Master Bedroom with En-Suite
- Solar Panels
- Integrated Garage & Parking
- Spacious Garden
- Great Location
- NB: Photos are artists impressions

£360,000



Energy Efficiency Rating		
	Current	Potential
Very energy efficient - lower running costs		
(92 plus) A		
(81-91) B		
(69-80) C		
(55-68) D		
(39-54) E		
(21-38) F		
(1-20) G		
Not energy efficient - higher running costs		
England & Wales	EU Directive 2002/91/EC	