



29 Shaw Lane, Carlton, S71 3HG

This stunning 4 bed detached home for sale on Shaw Lane will quickly be snapped up at this price.

Situated in the popular village of Carlton, close to the local park and good schools making it perfect for any growing family.

The spacious accommodation is set over 3 floors and briefly comprises, a stunning lounge leading on to the enclosed rear garden, kitchen/diner with integrated appliances and downstairs WC. On the upper floors you will find the house bathroom, 4 bedrooms, 2 of which have en-suite.

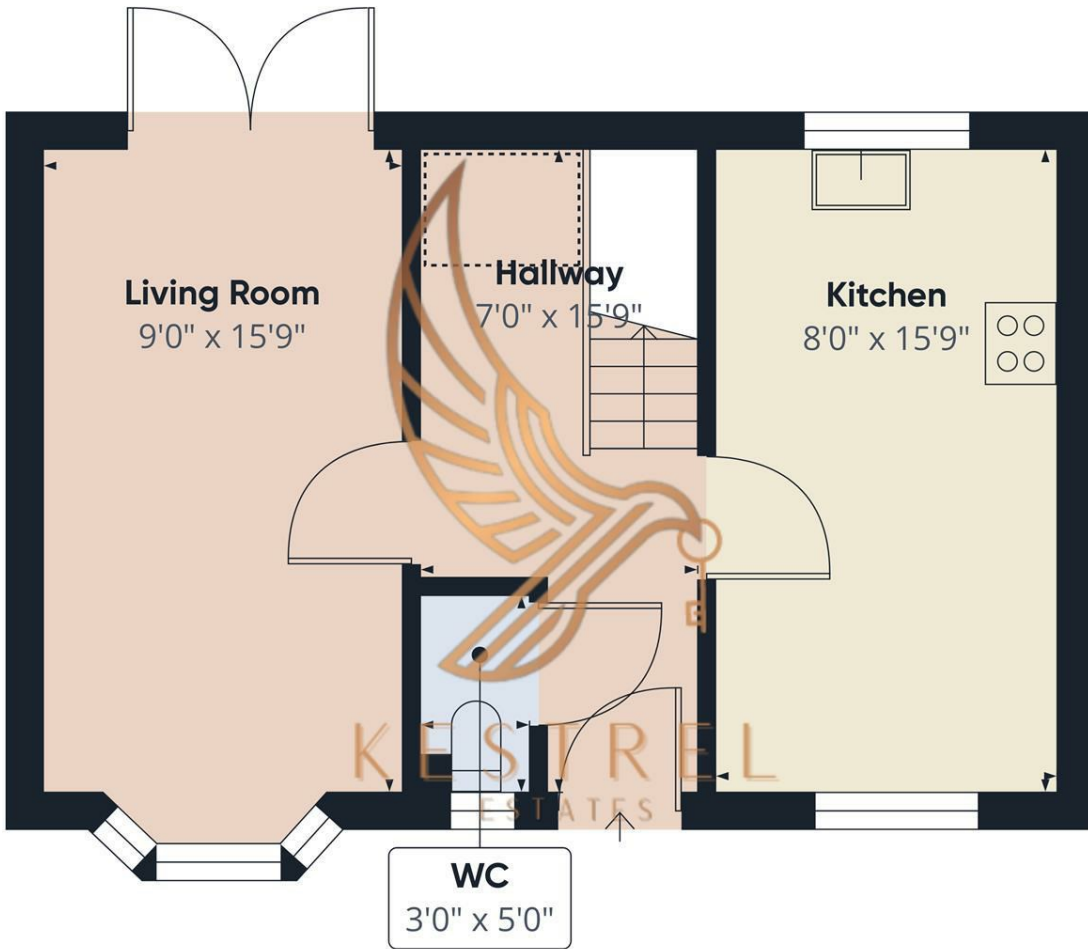
To the front there is off road parking for several vehicles

This beautiful home for sale on Carlton is one of a popular small development. With its close proximity to the local town and motorway links, this property ticks all the boxes.

Secure your viewing today

- 4 Bed Detached Property
- Modern Interior Throughout
- Open Plan Kitchen Dining
- Rear Enclosed Garden
- Driveway Providing Off Street Parking for Multiple Cars
- Perfect For Growing Families

£250,000



Floor 0

Approximate total area¹⁾
401.28 ft²

Reduced headroom
10.76 ft²

(1) Excluding balconies and terraces

Reduced headroom
(below 1.5m/4.92ft)

While every attempt has been made to ensure accuracy, all measurements are approximate, not to scale. This floor plan is for illustrative purposes only.

GIRAFFE360

Energy Efficiency Rating		Current	Potential
Very energy efficient - lower running costs			
(92 plus) A			87
(81-91) B		78	
(69-80) C			
(55-68) D			
(39-54) E			
(21-38) F			
(1-20) G			
Not energy efficient - higher running costs			
England & Wales		EU Directive 2002/91/EC	