



17 Pitt Close, Kinsley, Pontefract, WF9 5FN

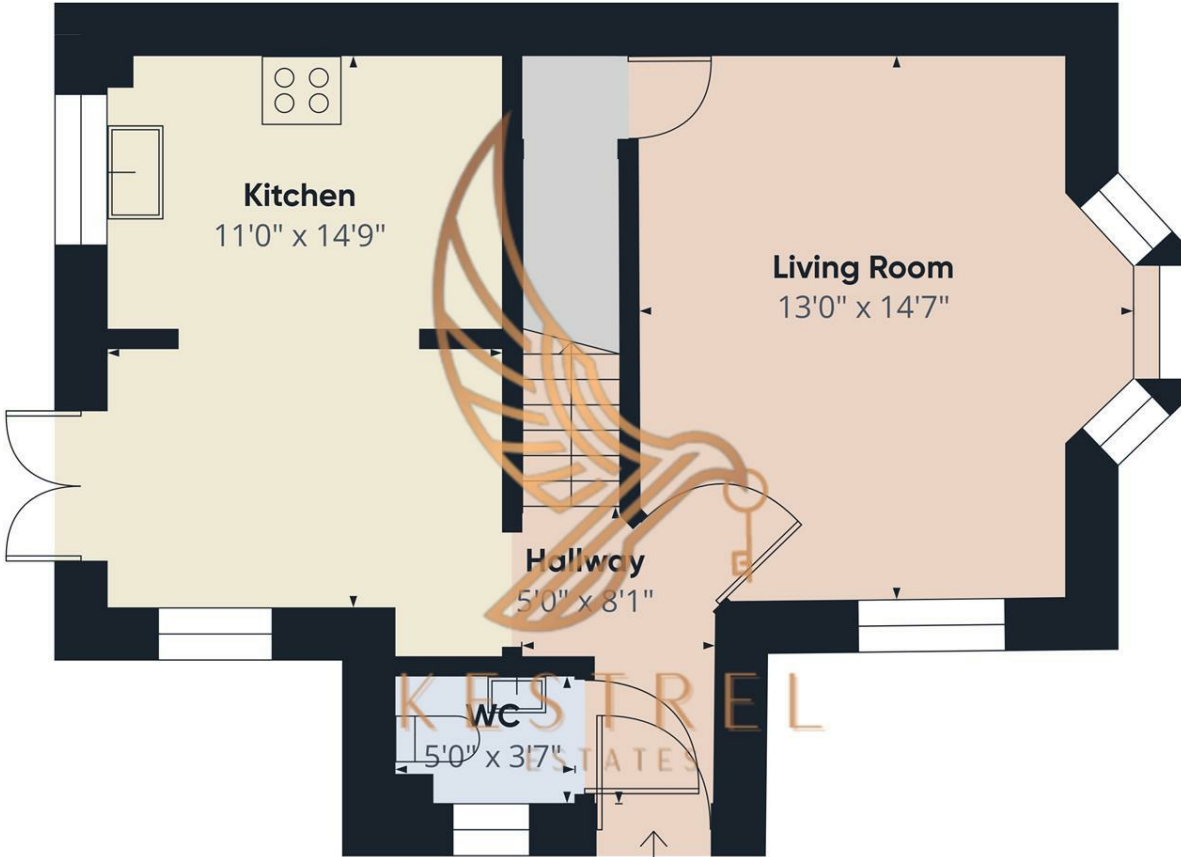
Welcome to this charming detached house located in the desirable Pitt Close. This property boasts a spacious layout with one reception room and large kitchen diner, perfect for entertaining guests or relaxing with family. With three bedrooms, there is ample space for a growing family or for those in need of a home office or guest room.

The two bathrooms in this house provide convenience and privacy for the residents, ensuring there are no queues during busy mornings. Parking is always a breeze with space for two vehicles, making trips to the shops or family outings stress-free.

Don't miss out on the opportunity to make this house your home. Contact us today to arrange a viewing and take the first step towards owning your dream property in Pitt Close.

- 3 Bed Detached House
- Double Drive
- Large Living Room
- Kitchen Diner
- Good Size Garden
- Close to Transport Links

£225,000



Floor 0

Approximate total area⁽¹⁾
422.59 ft²

(1) Excluding balconies and terraces

While every attempt has been made to ensure accuracy, all measurements are approximate, not to scale. This floor plan is for illustrative purposes only.

GIRAFFE360

Energy Efficiency Rating		Current	Potential
Very energy efficient - lower running costs			
(92 plus) A			94
(81-91) B		83	
(69-80) C			
(55-68) D			
(39-54) E			
(21-38) F			
(1-20) G			
Not energy efficient - higher running costs			
England & Wales		EU Directive 2002/91/EC	