

16 Penarth Terrace, Upton, WF9 1DZ

This gorgeous 3 bed semi detached house for sale in Upton has been finished to a beautiful standard throughout.

As you enter the property you are greeted with a spacious hallway which leads onto the lounge with large windows allowing plenty of natural light.

Straight forward you will find the well equipped kitchen, separate utility with a WC, the dining room is to the right of the kitchen, with double doors leading through to the enclosed rear garden.

Upstairs there are 2 double and a single bedroom and a beautiful bathroom.

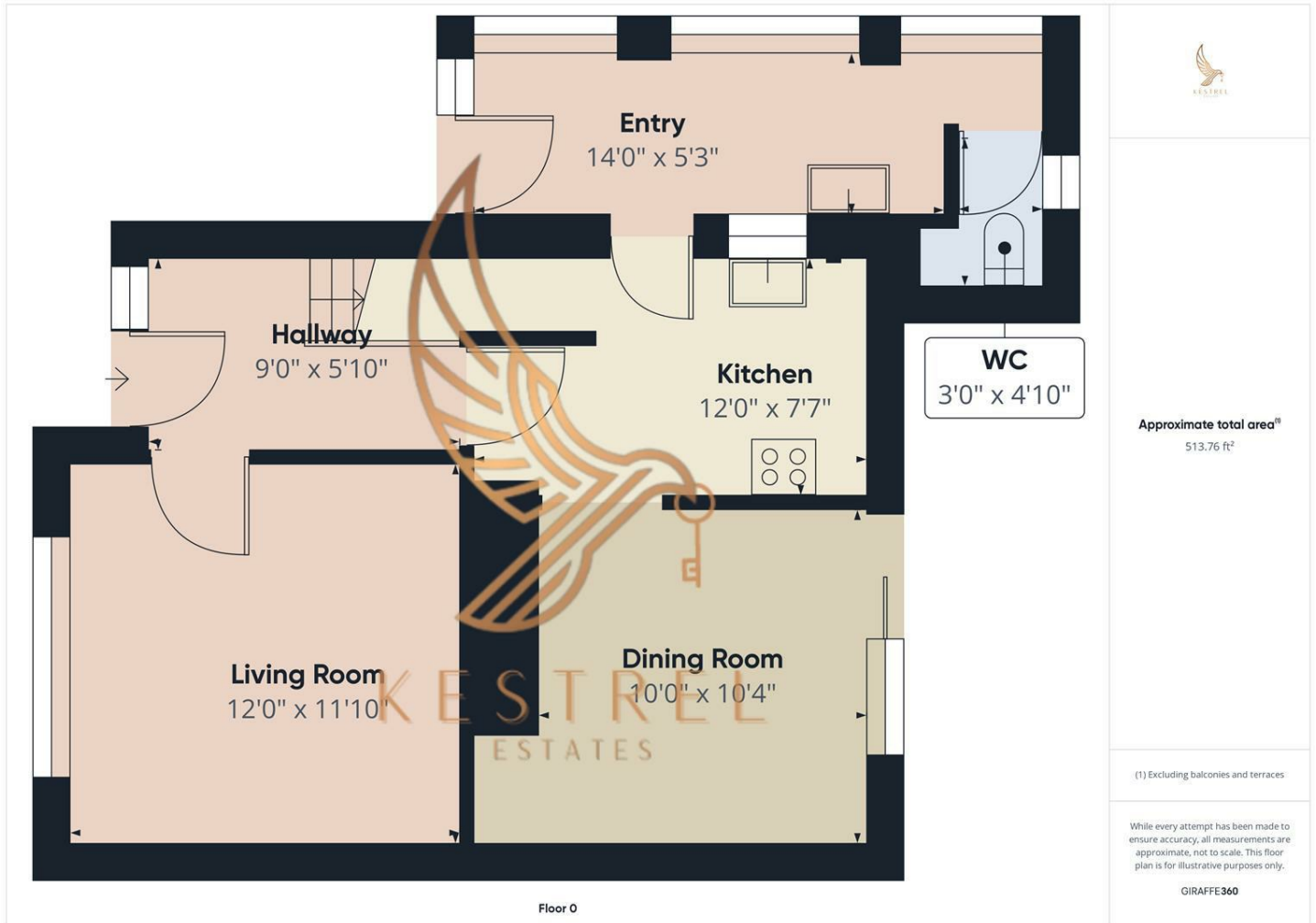
Externally there is a drive to accommodate numerous vehicles as well as the well maintained enclosed garden and detached garage.

This home is perfect for first time buyers and families.

Book your viewing today on this 3 bed semi detached house for sale on Penarth Terrace.

- 3 Bed Semi Detached
- Beautifully Decorated Throughout
- Fitted Kitchen with Utility Room & Downstairs WC
- Dining Room Leading onto the Garden
- Garage & Off Road Parking
- Great Location & Amenities
- Perfect for First Time Buyers and Families

£215,000



Energy Efficiency Rating		Current	Potential
Very energy efficient - lower running costs			
(92 plus) A			
(81-91) B			82
(69-80) C		62	
(55-68) D			
(39-54) E			
(21-38) F			
(1-20) G			
Not energy efficient - higher running costs			
England & Wales	EU Directive 2002/91/EC		