

98 Beech Street, South Elmsall, Pontefract, WF9 2LT

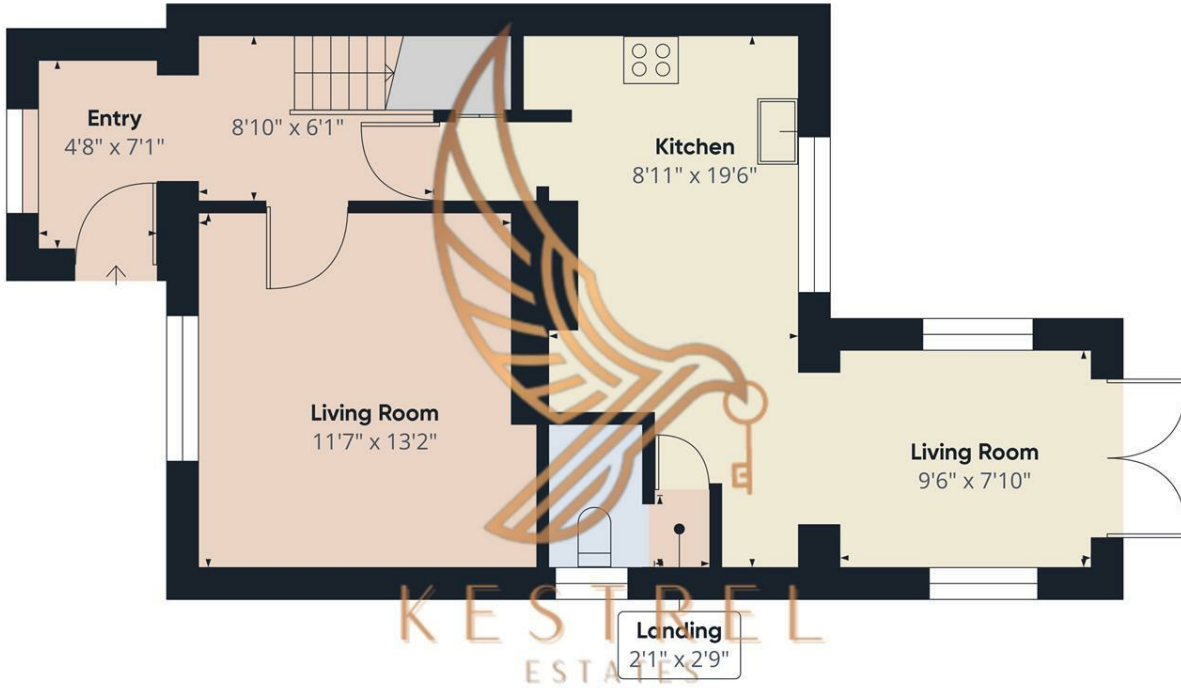
WOW WOW WOW!

Presented by Leanne Gill of Kestrel Estates, this stunning 4-bedroom property in South Elmsall offers a fitted kitchen/diner with a sitting area and French doors leading to a well-maintained garden. The main floor includes a separate lounge and a convenient W/C. Upstairs, discover four generously sized bedrooms, including a master with an en-suite, providing ample space for growing families. An additional family bathroom adds to the practicality of the layout. External features include a driveway for off-street parking. With proximity to local shops, schools, transport links, and amenities, do not miss the opportunity to turn this South Elmsall property into your dream home – arrange a viewing today.

With NO CHAIN this home is perfect

- 4 Bed Semi-Detached Property
- Modern Kitchen/Dining/Snug area
- Downstairs WC
- Off Road Parking
- Garden To The Rear
- Close To Local Shops And Schools
- Close To Transport Links
- NO CHAIN

£200,000



Approximate total area[®]
540.59 ft²

Excluding balconies and terraces

While every attempt has been made to ensure accuracy, all measurements are approximate, not to scale. This floor plan is for illustrative purposes only.

GIRAFFE360

Floor 0

Energy Efficiency Rating		Current	Potential
Very energy efficient - lower running costs			
(92 plus) A			
(81-91) B			
(69-80) C			
(55-68) D			
(39-54) E			
(21-38) F			
(1-20) G			
Not energy efficient - higher running costs			
England & Wales	EU Directive 2002/91/EC		