

2 Hawthorn Drive, Hemsworth, Pontefract, WF9 4TT

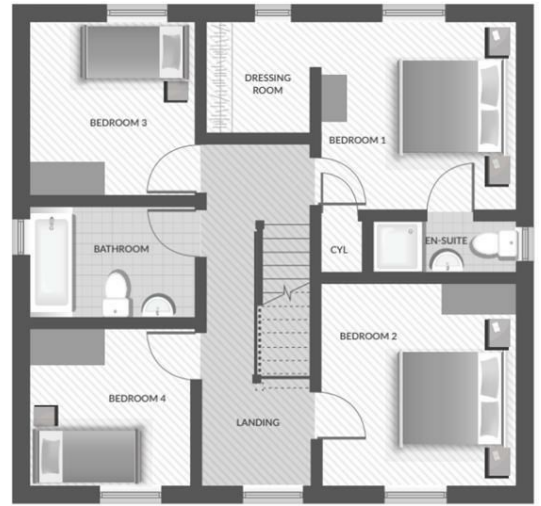
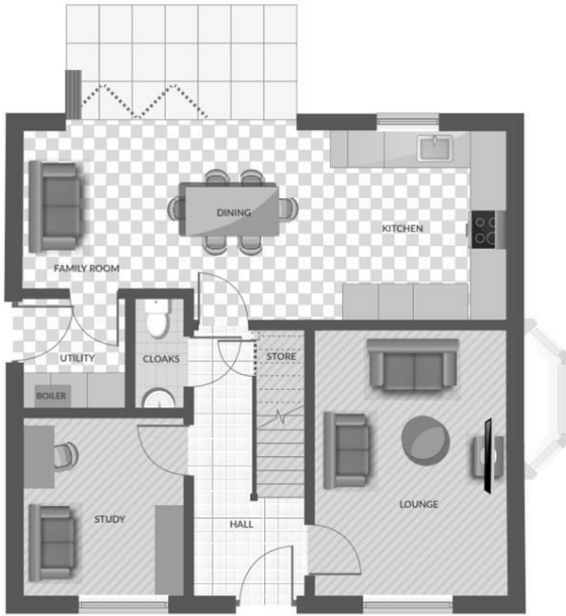
The stunning New Development in Hemsworth by Saul Homes brings you The Maple., a Luxury 4 Bed Detached home in Hemsworth. This spacious property offers a generous kitchen, dining and family area sitting at the rear of the house, with modern bi-folding doors leading to the garden. The Kitchen also has a separate utility room with downstairs WC. The lounge creates an additional family living area plus a Study ideal for anyone working from home. Upstairs, all four bedrooms have good proportions. The master bedroom has its own en-suite and Walk-in wardrobe. The main bathroom includes an over-bath shower, fully tiled walls in a choice of tile designs. To the side of the property there's a single garage and parking space for two cars. The home is perfect for families and commuters to the nearby towns. It's close to local shops parks and motorways.

Key Features:

SOLAR PANELS FITTED
NEW DEVELOPMENT- OAKLANDS
ELECTRIC CAR CHARGING POINT
FULLY TILED BATHROOMS
TURFED GARDENS

- THE MAPLE
- NEW BUILD - HEMSWORTH DEVELOPMENT
- 4 Bed Detached Home
- Master With En-Suite & Dressing Area
- Kitchen/Dining Area
- Study
- Utility Room & Store
- Garage & Parking
- * Photos are artists Impressions *

£350,000



Energy Efficiency Rating		
	Current	Potential
<i>Very energy efficient - lower running costs</i>		
(92 plus) A		
(81-91) B		
(69-80) C		
(55-68) D		
(39-54) E		
(21-38) F		
(1-20) G		
<i>Not energy efficient - higher running costs</i>		
England & Wales	EU Directive 2002/91/EC	