



6 Woodlands Place, Hemsworth, Pontefract, WF9 4GD

Discover The Willows by Saul Homes, a beautiful 3 Bed Detached home in Hemsworth. Spend quality time with your family in the kitchen/diner, with patio doors that bring extra light and access to the garden. The lounge features a bay window, adding space to the room. Plus, there's a convenient downstairs W.C. Upstairs, two generously proportioned bedrooms can accommodate double beds, while the third room is perfect for a spare or child's bedroom. The bathroom boasts a three-piece suite and fully tiled walls. Perfect for growing families and commuters. Close to local shops, parks, and motorways. Call for more information.

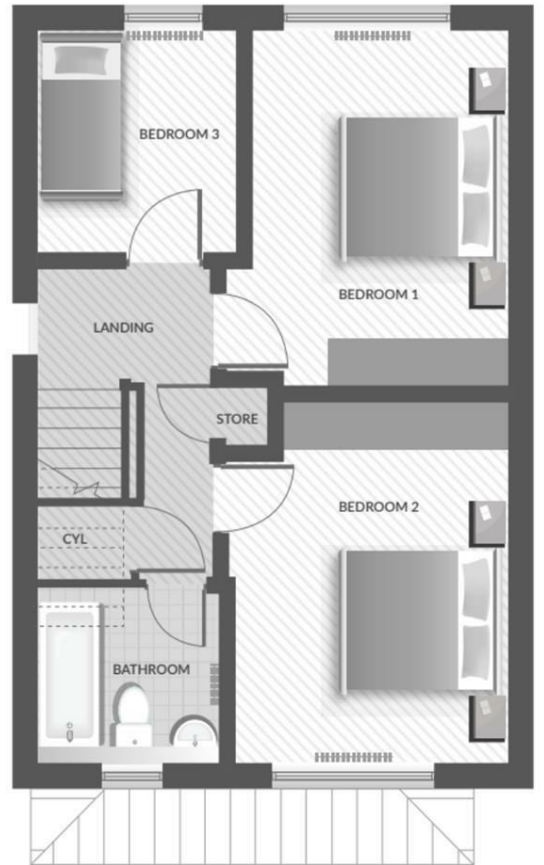
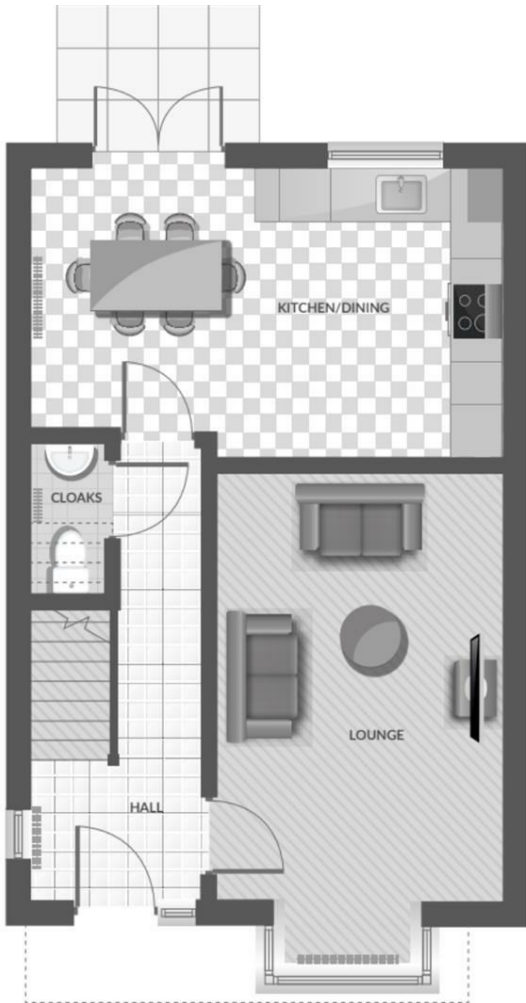
Key Features:

SOLAR PANELS FITTED
NEW DEVELOPMENT - OAKLANDS
ELECTRIC CAR CHARGING POINT
FULLY TILED BATHROOMS
TURFED GARDENS
BOSCH APPLIANCES

Visit SAUL HOMES HEAD OFFICE, Burntwood Court, Common Road, Brierley Common, Brierley, S72 9ET.

- THE WILLOWS
- NEW DEVELOPMENT - HEMSWORTH
- 3 Bed Detached Home
- Open Plan Kitchen/ Diner
- Generous Bedrooms
- Perfect for Families
- Off Road Parking
- NB - Photos are artists impressions

£250,000



Energy Efficiency Rating		
	Current	Potential
<i>Very energy efficient - lower running costs</i>		
(92 plus) A		
(81-91) B		
(69-80) C		
(55-68) D		
(39-54) E		
(21-38) F		
(1-20) G		
<i>Not energy efficient - higher running costs</i>		
England & Wales	EU Directive 2002/91/EC	