



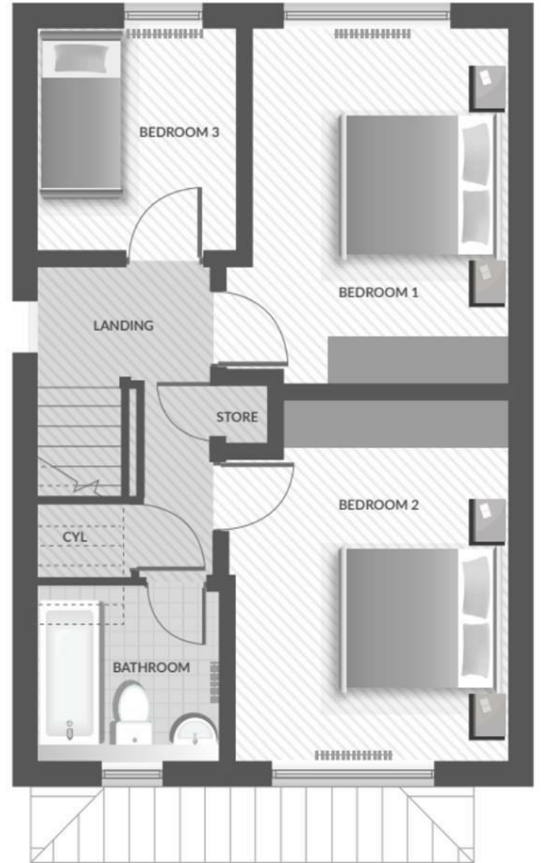
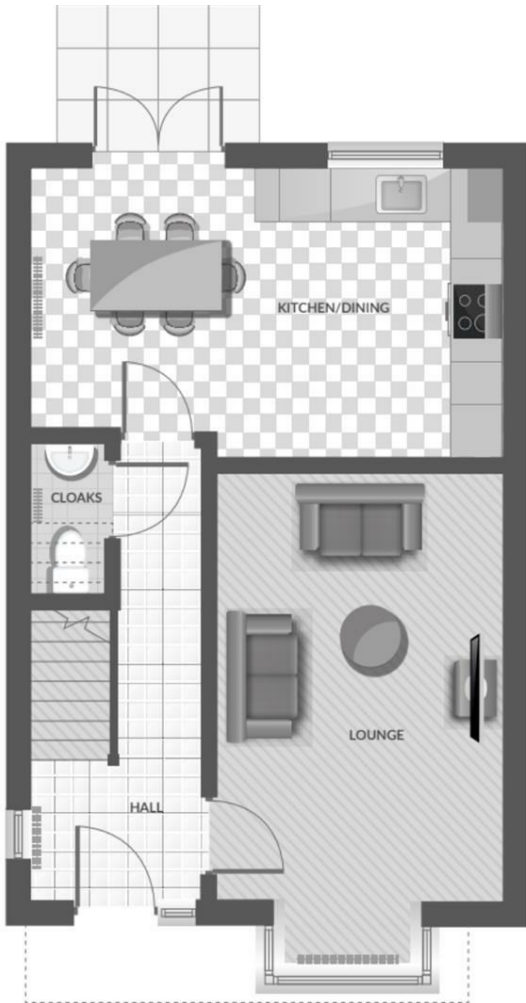
## 6 Woodlands Place, Hemsworth, Pontefract, WF9 4GD

Discover The Willows by Saul Homes, a beautiful 3 Bed Detached home in Hemsworth. Spend quality time with your family in the kitchen/diner, with patio doors that bring extra light and access to the garden. The lounge features a bay window, adding space to the room. Plus, there's a convenient downstairs W.C. Upstairs, two generously proportioned bedrooms can accommodate double beds, while the third room is perfect for a spare or child's bedroom. The bathroom boasts a three-piece suite and fully tiled walls. Perfect for growing families and commuters. Close to local shops, parks, and motorways. Call for more information.

Visit our Showhome and Marketing Suite, Saul Homes - Willowgath Site, Grimethorpe, Barnsley S72 7AJ

- THE WILLOWS
- NEW DEVELOPMENT - HEMSWORTH
- 3 Bed Detached Home
- Open Plan Kitchen/ Diner
- Generous Bedrooms
- Perfect for Families
- Off Road Parking
- NB - Photos are artists impressions

**£250,000**



Energy Efficiency Rating		
	Current	Potential
<i>Very energy efficient - lower running costs</i>		
(92 plus) <b>A</b>		
(81-91) <b>B</b>		
(69-80) <b>C</b>		
(55-68) <b>D</b>		
(39-54) <b>E</b>		
(21-38) <b>F</b>		
(1-20) <b>G</b>		
<i>Not energy efficient - higher running costs</i>		
<b>England &amp; Wales</b>	EU Directive 2002/91/EC	