



## 59 Beech Street, South Elmsall, Pontefract, WF9 2LS

Kestrel Estates are proud to present this beautiful 3 bed semi detached house for sale in South Elmsall with a good paying tenant in-situ. This property is the perfect investment. The accommodation internally briefly comprises:- entrance hall, living room, Kitchen/Diner, Stairs and landing then lead to three good sized bedrooms and bathroom. To the rear is a spacious garden and a driveway to the front providing off-street parking. To find out more check out the video and floor plans.

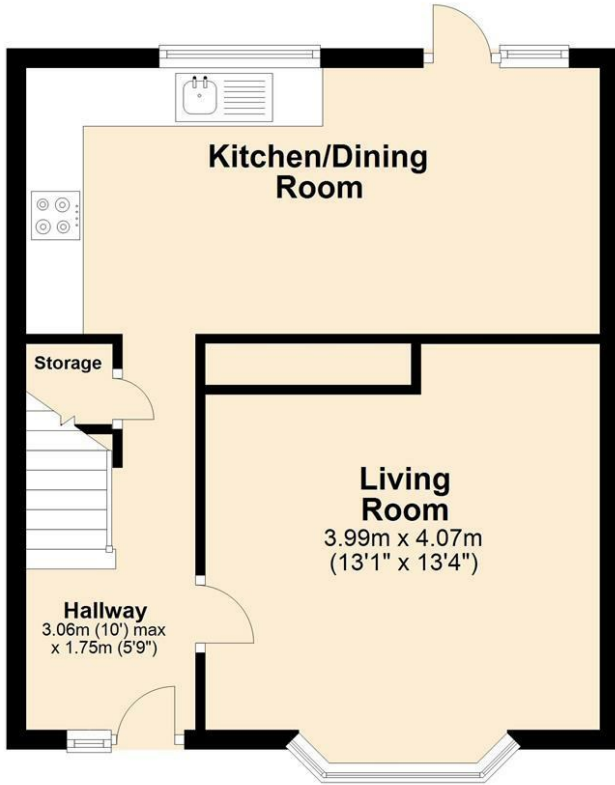
- Good paying tenant in-situ
- Perfect for investors
- 3 Bed Semi- Detached
- Spacious rear garden
- Driveway providing off street parking

Book your viewing today on this 3 bed semi detached house for sale on Beech Street.

**£150,000**

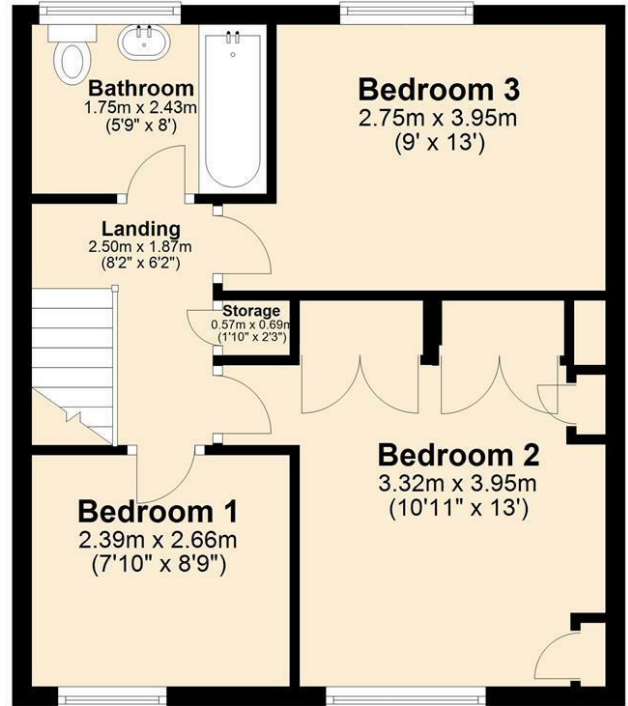
## Ground Floor

Approx. 40.8 sq. metres (438.8 sq. feet)



## First Floor

Approx. 40.5 sq. metres (436.0 sq. feet)



Total area: approx. 81.3 sq. metres (874.9 sq. feet)

