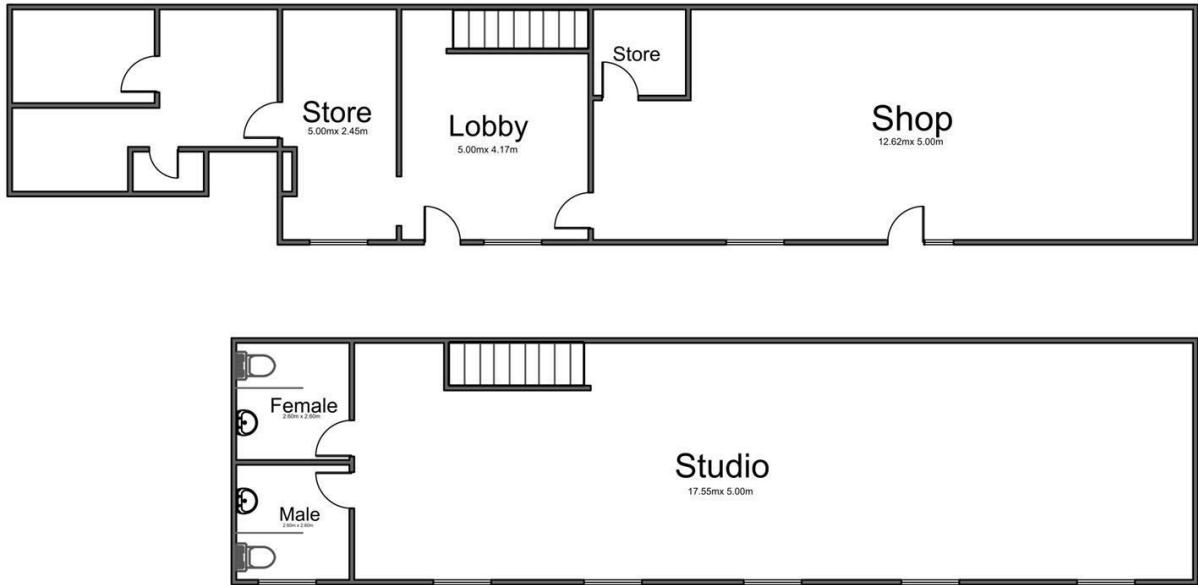


Long House North Street, South Kirkby, Pontefract, West Yorkshire, WF9 3LX

- Opportunity for renovation subject to planning consent
- Close to local amenities
- Period Property

£155,000



Energy Efficiency Rating		Current	Potential
<i>Very energy efficient - lower running costs</i>			
(92 plus) A			
(81-91) B			
(69-80) C			
(55-68) D			
(39-54) E			
(21-38) F			
(1-20) G			
<i>Not energy efficient - higher running costs</i>			
England & Wales	EU Directive 2002/91/EC		