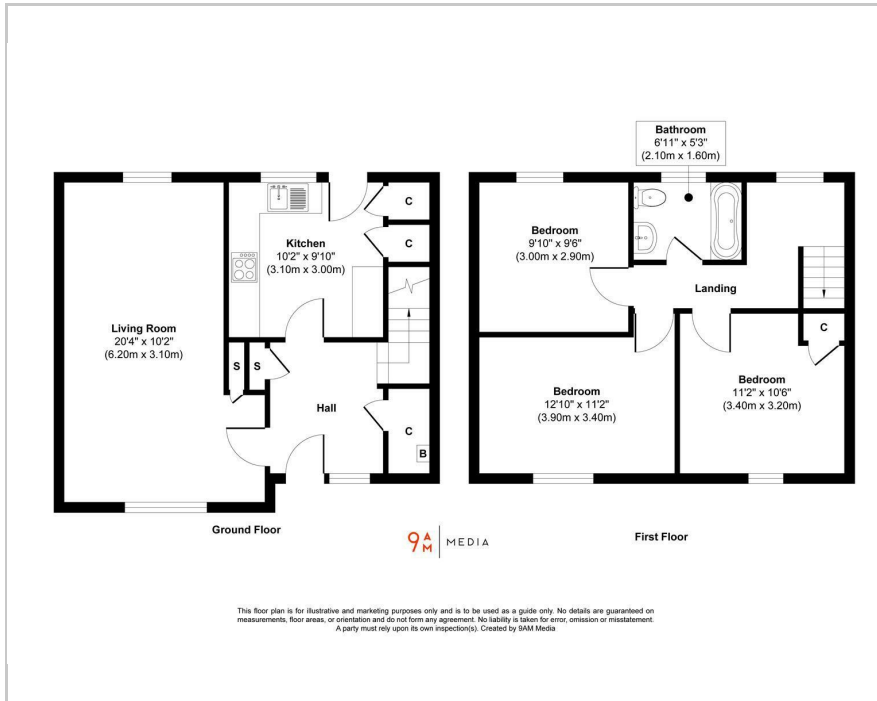




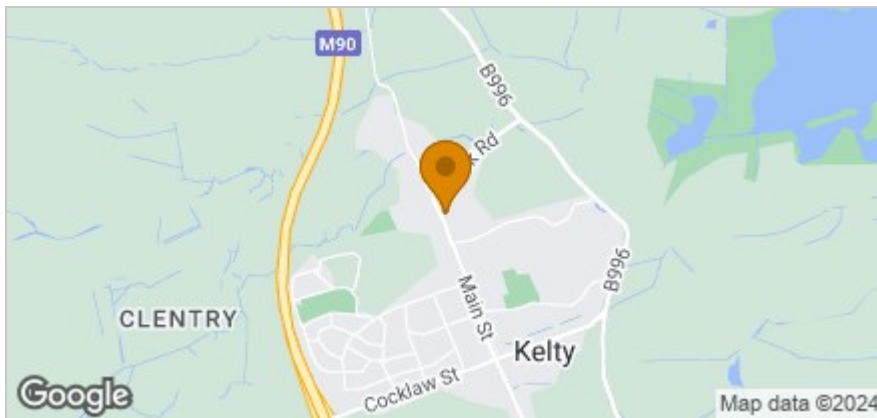
6 Earls Row, Kelty, KY4 0AF
Offers over £135,000

3 1 1 C

Floor Plan



Area Map



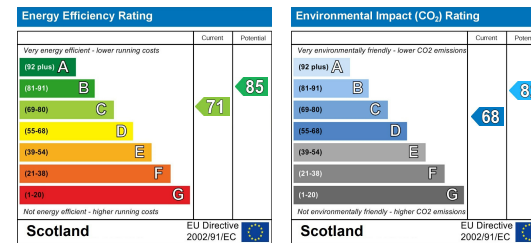
Accommodation

- Reception Hall
- Spacious Lounge
- Modern Breakfasting Kitchen
- Three Double Bedrooms
- Family Bathroom
- Gas Central Heating
- Double Glazing
- Generous Rear Garden
- Fantastic Views
- Sought After Location

Viewing

Please contact our Kirkcaldy Office on 01592 641000 if you wish to arrange a viewing appointment for this property or require further information.

Energy Efficiency Graph



These particulars, whilst believed to be accurate are set out as a general outline only for guidance and do not constitute any part of an offer or contract. Intending purchasers should not rely on them as statements of representation of fact, but must satisfy themselves by inspection or otherwise as to their accuracy. No person in this firm's employment has the authority to make or give any representation or warranty in respect of the property.