

MAKENZIE  
THREE  
BEDROOM  
HOME

BLOOR HOMES



A three bedroom semi-detached family home offering a charming lounge and stunning open plan kitchen / dining area with French doors leading to the rear garden. Downstairs also comprises a convenient utility area and cloakroom. The master suite occupies the whole of the second floor and benefits from an en suite shower room.

MAKENZIE

A BEAUTIFUL THREE  
BEDROOM SEMI-DETACHED  
FAMILY HOME

**MAKENZIE  
THREE  
BEDROOM  
HOME**

**GROUND FLOOR:**

**LOUNGE**

3.32m x 4.46m  
10'11" x 14'8"

**KITCHEN / DINING**

3.20m x 3.74m  
10'6" x 12'3"

**UTILITY**

1.05m x 1.70m  
3'5" x 5'7"

**CLOAKS**

**FIRST FLOOR:**

**BEDROOM 2**

4.32m x 2.84m  
14'2" x 9'4"

**BEDROOM 3**

2.24m x 3.16m  
7'4" x 10'4"

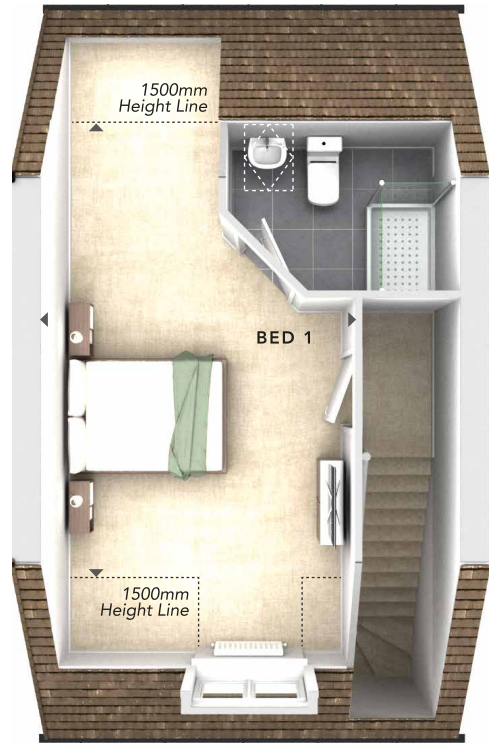
**BATHROOM**

**SECOND FLOOR:**

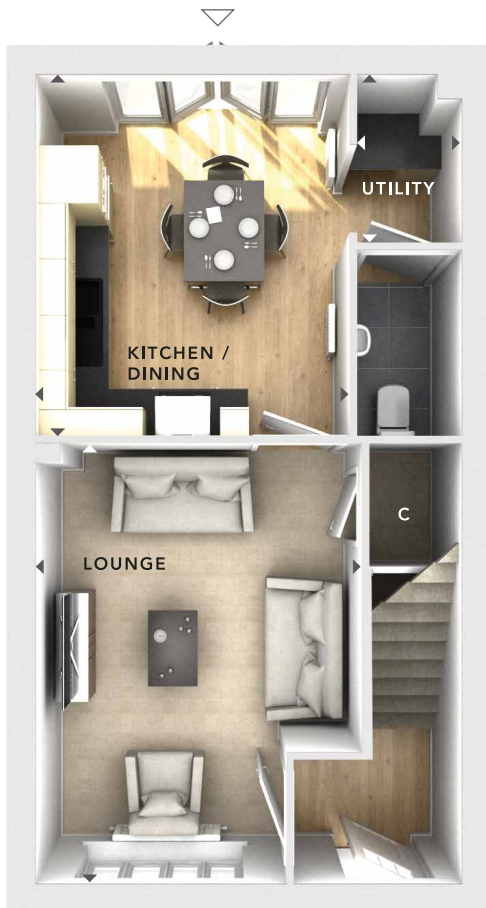
**BEDROOM 1**

3.21m x 5.55m  
10'6" x 18'3"

**EN SUITE**



**SECOND  
FLOOR**



**GROUND  
FLOOR**



**FIRST  
FLOOR**

<b>C</b>	- Storage
<b>△</b>	- External Access
<b>◄►</b>	- Measurement Points
<b>384 BRICK 4.15</b>	

**BLOOR HOMES**

These particulars are intended as a preliminary guide for prospective purchasers and should not be relied upon. The elevational treatment for individual house types shows a typical arrangement. Details of materials and design treatments may vary. Any artist impressions shown are not intended to represent any particular plot. Purchasers are advised to inspect the layout plan to establish the arrangement of the house and surrounding property. Internal layouts show a general arrangement which may vary from plot to plot. Room sizes given are approx. overall finished room sizes and subject to normal building tolerances (ie ± 75mm). In all instances purchasers are advised to inspect plot specific information available from our sales team. Nothing in these particulars or verbal assurance shall form or constitute part of any contract, and are given without any responsibility on behalf of Bloor Homes.