

WILTON  
THREE  
BEDROOM  
HOME

BLOOR HOMES



A three bedroom detached home comprising a spacious lounge with bay window and fantastic open plan kitchen / dining / family area, featuring French doors leading to the rear garden. Downstairs also comprises a utility cupboard and cloakroom. Upstairs, is home to three spacious double bedrooms with the master bedroom benefitting from fitted wardrobes a dressing area and an en suite shower room.

WILTON

A SPACIOUS THREE BEDROOM  
DETACHED FAMILY HOME

**WILTON  
THREE  
BEDROOM  
HOME**

**FIRST FLOOR:**

**BEDROOM 1**  
4.55m x 2.98m  
14'11" x 9'9"

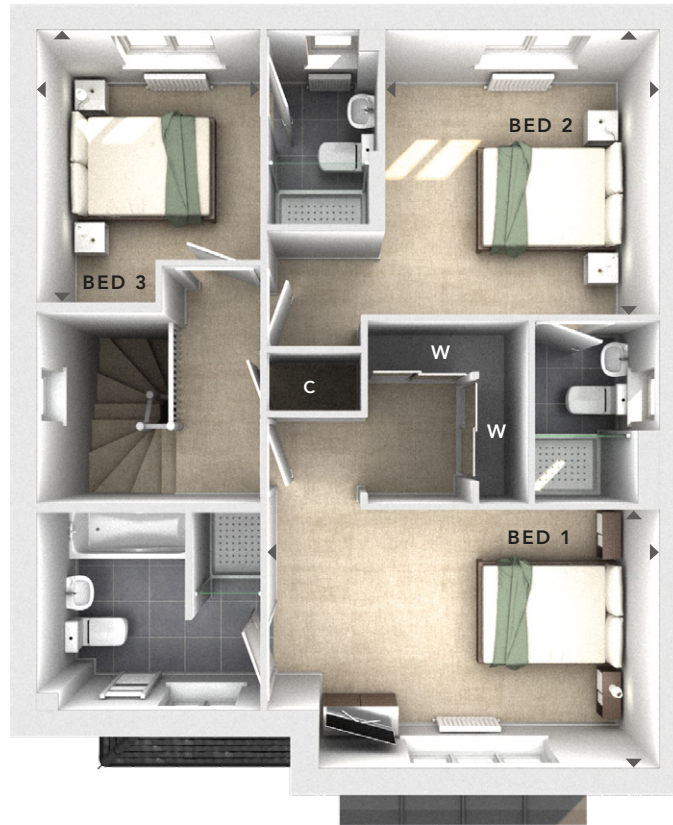
**EN SUITE**

**BEDROOM 2**  
3.17m x 3.29m  
10'5" x 10'10"

**EN SUITE**

**BEDROOM 3**  
2.58m x 3.15m  
8'6" x 10'4"

**EN SUITE**



**FIRST  
FLOOR**

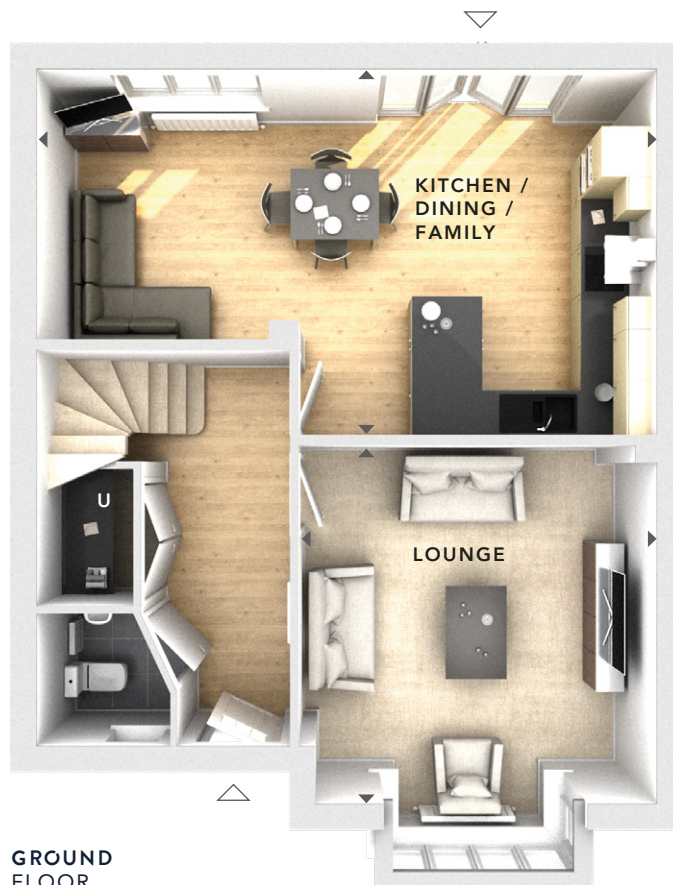
**GROUND FLOOR:**

**LOUNGE**  
4.11m x 4.15m  
13'6" x 13'7"

**KITCHEN / DINING /  
FAMILY**  
7.20m x 4.25m  
23'8" x 13'11"

**UTILITY CUPBOARD**

**CLOAKS**



**GROUND  
FLOOR**

W	- Fitted Wardrobes
C	- Storage
U	- Utility Cupboard
△	- External Access
◀▶	- Measurement Points
© Bloor Homes • 394B 4.3	



These particulars are intended as a preliminary guide for prospective purchasers and should not be relied upon. The elevational treatment for individual house types shows a typical arrangement. Details of materials and design treatments may vary. Any artist impressions shown are not intended to represent any particular plot. Purchasers are advised to inspect the layout plan to establish the arrangement of the house and surrounding property. Internal layouts show a general arrangement which may vary from plot to plot. Room sizes given are approx. overall finished room sizes and subject to normal building tolerances (ie ± 75mm). In all instances purchasers are advised to inspect plot specific information available from our sales team. Nothing in these particulars or verbal assurance shall form or constitute part of any contract, and are given without any responsibility on behalf of Bloor Homes.