

ARLINGTON
PARK



Hotblack Road
Norwich, NR2 4HN
£575 Per Month



HOUSE SHARE *ZERO DEPOSIT AVAILABLE* Double bedroom in a shared property comprising seven bedrooms. This spacious and comfortable room offers ample living space and comes fully furnished. The property boasts shared amenities, including a kitchen, common areas, and bathrooms. Perfect for individuals seeking a friendly and communal living environment while enjoying the convenience of city living in Norwich.

- HOUSE SHARE
- 7 Bedrooms - 6 Occupied (MALE)



FULL DESCRIPTION

HOUSE SHARE Spacious Double Bedroom with Ensuite in a 7-Bedroom House

Discover a comfortable double bedroom with its own ensuite bathroom in this 7-bedroom house.

Inside the bedroom, you'll find essential furnishings to meet your needs. The room is equipped with a bed, desk, chair, and wardrobe. This room shares a bathroom with two other occupants.

The property offers additional features for your convenience. The recently fitted kitchen is spacious and fully equipped, including a dishwasher and a large gas range cooker. A utility room is available, complete with a freezer, washing machine, and tumble dryer for your laundry needs.

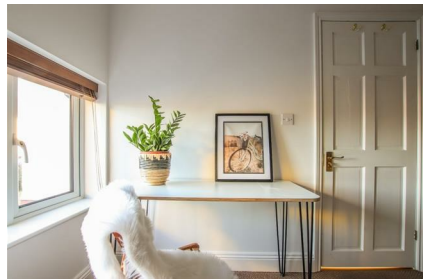
Relax and entertain in the communal open plan living room, furnished with a flat-screen TV. From there, you can access the enclosed garden, which features a patio area with terrace furniture and a BBQ, ideal for outdoor enjoyment.

Parking options include both limited off-road and on-road parking, providing flexibility for your vehicles.

The rent includes all utility bills, council tax, and Wi-Fi. A cleaner visits weekly to maintain the shared areas, ensuring a comfortable and tidy environment.

****Important note:**** This room is for a single working professional and pets are not permitted in this property.

The house is equipped with an interlinked fire alarm system and fire extinguishers/blankets throughout. Gas, fire safety, and electrical certificates are all in place for peace of mind.



ARLINGTON PARK

Interested in learning more or scheduling a viewing? Click "Email Agent" or "Request Information" on this listing.

To qualify for a viewing, please complete the pre-qualification questionnaire we send you.



These particulars, whilst believed to be accurate are set out as a general outline only for guidance and do not constitute any part of an offer or contract. Intending purchasers should not rely on them as statements of representation of fact, but must satisfy themselves by inspection or otherwise as to their accuracy. No person in this firm's employment has the authority to make or give any representation or warranty in respect of the property.



ARLINGTON PARK

Interested in learning more or scheduling a viewing? Click "Email Agent" or "Request Information" on this listing.

To qualify for a viewing, please complete the pre-qualification questionnaire we send you.

Energy Efficiency Rating		Current	Potential
Very energy efficient - lower running costs			
(92 plus) A			
(81-91) B			84
(69-80) C		72	
(55-68) D			
(39-54) E			
(21-38) F			
(1-20) G			
Not energy efficient - higher running costs			
England & Wales		EU Directive 2002/91/EC	



25a Earlham Road, Norwich, Norfolk, NR2 3AD
Tel: 01603 577255 Email: youragent@arlingtonpark.co.uk
<https://www.arlingtonpark.co.uk/>