



26 Gertrude Road
, Norwich, NR3 4SQ
£1,150

***zero deposit guarantee available* Charming 3-bedroom Norwich home with private garden in a sought-after location near shops, schools, and parks.**

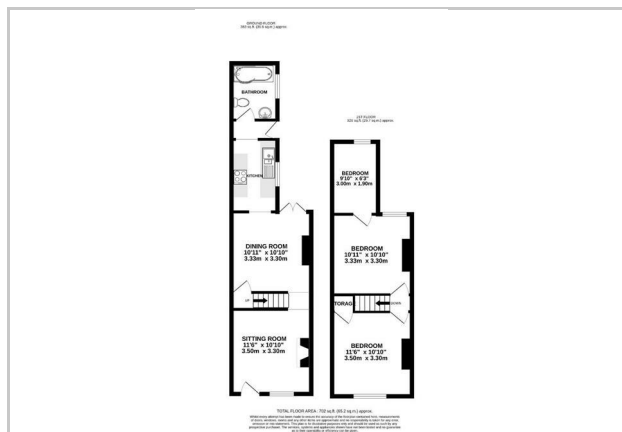


This delightful three-bedroom property is situated in the popular NR3 area of Norwich, just a short distance from the city centre. The home offers a well-proportioned layout, with an entrance hall, living room, dining room, kitchen, and bathroom downstairs. Upstairs, there are two good-sized double bedrooms and a further third bedroom.

To the rear of the property is a long, private garden with a variety of plants, shrubs, and a pond. There's also a brick shed and a timber store/summerhouse, perfect for storage or hobbies. The property benefits from gated side access and a non-bisected layout, adding to its appeal.

The property is conveniently located on Gertrude Road, north of Norwich city centre, just off Sprowston Road. Within walking distance, you'll find a variety of shops, bakeries, restaurants, pubs, and schools for all ages. The beautiful Mousehold Heath is also nearby, offering stunning walks and green space.

Pet policy: Pets may be considered by the landlord.



Energy Efficiency Rating		Current	Potential
Very energy efficient - lower running costs			
(92 plus) A			87
(81-91) B			
(69-80) C		69	
(55-68) D			
(39-54) E			
(21-38) F			
(1-20) G			
Not energy efficient - higher running costs			
England & Wales		EU Directive 2002/91/EC	

These particulars, whilst believed to be accurate are set out as a general outline only for guidance and do not constitute any part of an offer or contract. Intending purchasers should not rely on them as statements of representation of fact, but must satisfy themselves by inspection or otherwise as to their accuracy. No person in this firm's employment has the authority to make or give any representation or warranty in respect of the property.

25a Earlham Road, Norwich, Norfolk, NR2 3AD
Tel: 01603 577255 Email: youragent@arlingtonpark.co.uk <https://www.arlingtonpark.co.uk/>