



Vie, 189 Water Street - M3

£185,000

2 2



Vie, by Redrow Homes lies between the River Irwell and Bridgewater Canal close to Manchester City centre and proves to be a popular location for renters.

In brief the property comprises of : Secure communal entrance with stairs / lifts to all floors, private entrance hallway with storage cupboard, spacious open plan living and kitchen area with integrated appliances, balcony with waterside views, two double bedrooms with the main being ensuite and a further bathroom with shower over the bath.

Externally the development sits within well kept communal grounds, which have an on site caretaker.

With the added benefit of SECURE ALLOCATED PARKING!

The property would make an ideal investment - let at £1250 PCM currently or a first time buy - mortgage buyers welcome.

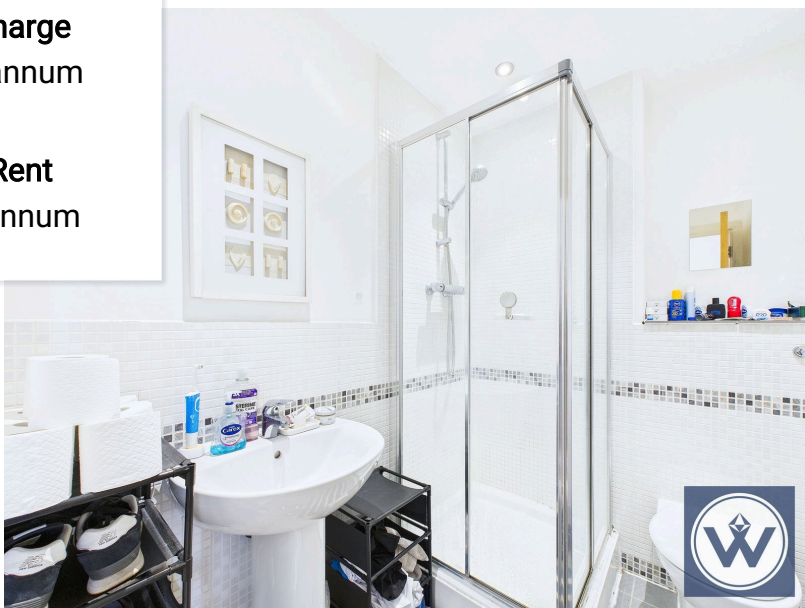
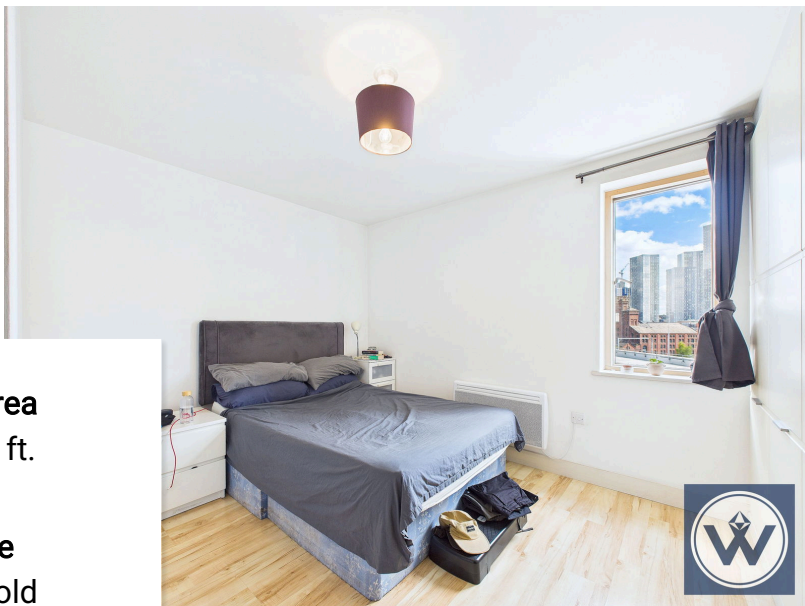


Floor Area
581 sq. ft.

Tenure
Leasehold

Service Charge
£TBC per annum

Ground Rent
£200 per annum



UK Offices | Canary Wharf - E14 Nine Elms - SE1 Royal Docks - E16 Bow - E3 Hayes, Middlesex - UB3 Manchester - M2

International Offices | Dublin Abu Dhabi Hong Kong Singapore

