



HENRY  **WILTSHIRE**

www.henrywiltshire.co.uk

Henry Wiltshire Limited Company Registration No. 07120440 VAT Registration No. 994 397 354

Registered Office: 2 Laybourne House, Admirals Way, Canary Wharf, London, United Kingdom E14 9UH

Eycot Drive, Middleton M24

£270,000

3 3

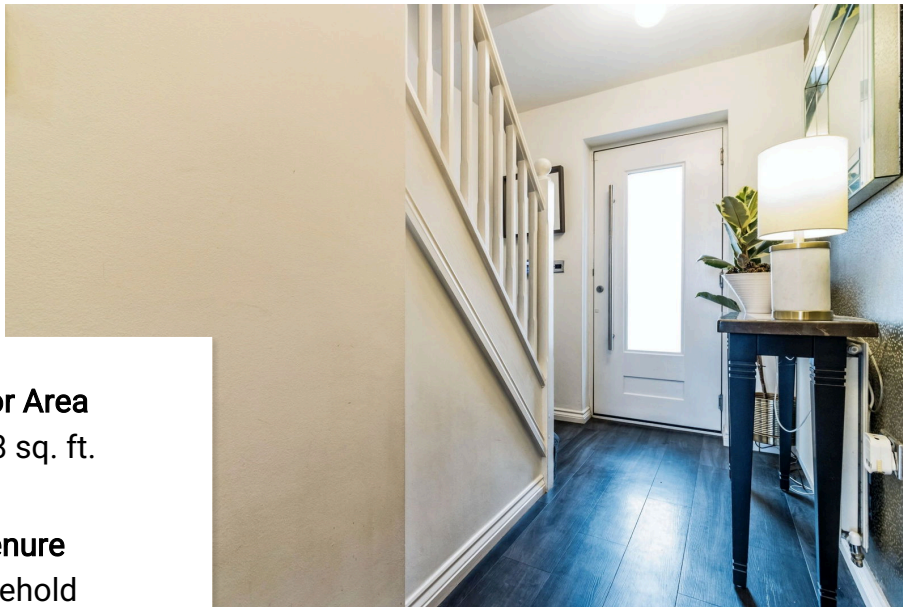


Eycott Drive, Middleton is nestled in a quiet residential area and offers stunning views over North Manchester Golf Club. Ideally located close to excellent amenities such as shops, supermarkets and schools plus superb transport links in and out of neighbouring Manchester.

This three storey, semi detached house is presented to an immaculate standard having been lovingly upgraded by the current owners to offer a substantial sized family home.

Located to the rear of this small development of modern homes the property comprises of : Entrance hallway with under stairs WC, kitchen diner with access to the rear garden, internal garage. To the first floor there's a spacious living room with balcony offering views over the golf course, second bedroom which has the added benefit of being en suite. Finally to the top floor you'll find a generously sized main bedroom with en suite bathroom featuring a separate shower and bath plus the third



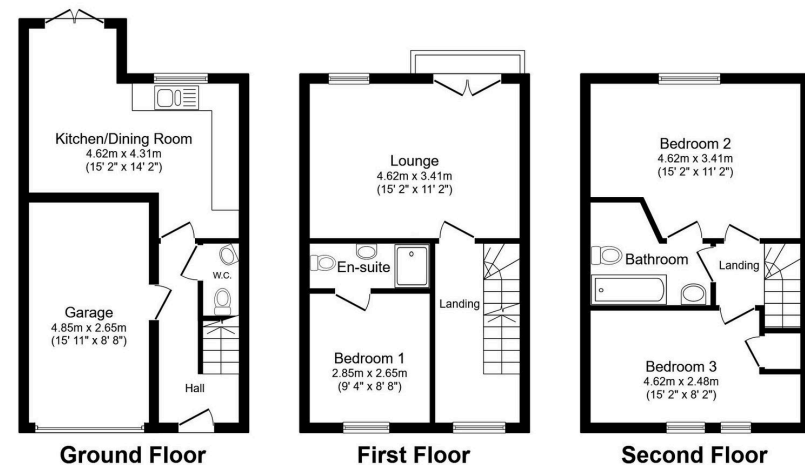


Floor Area
1138 sq. ft.

Tenure
Freehold

Service Charge
£0 per annum

Ground Rent
£0 per annum



Total floor area 105.7 m² (1,138 sq.ft.) approx

This floor plan is for illustrative purposes only. It is not drawn to scale. Any measurements, floor areas (including any total floor area), openings and orientation are approximate. No details are guaranteed, they cannot be relied upon for any purpose and they do not form part of any agreement. No liability is taken for any error, omission or misstatement. A party must rely upon its own inspection(s).
Plan produced for Henry Wiltshire. Powered by www.focalagent.com

Energy Efficiency Rating

	Current	Potential
Very energy efficient - lower running costs		
(92 plus) A		
(81-91) B		88
(69-80) C	77	
(55-68) D		
(39-54) E		
(21-38) F		
(1-20) G		
Not energy efficient - higher running costs		
England & Wales	EU Directive 2002/91/EC	

UK Offices | Canary Wharf - E14 | Nine Elms - SE1 | Royal Docks - E16 | Bow - E3 | Hayes, Middlesex - UB3 | Manchester - M2

International Offices | Dublin | Abu Dhabi | Hong Kong | Singapore

