



www.henrywiltshire.co.uk

Henry Wiltshire Limited Company Registration No. 07120440 VAT Registration No. 994 397 354

Registered Office: 2 Laybourne House, Admirals Way, Canary Wharf, London, United Kingdom E14 9UH

North Central, 9 Dyche Street, Northern Quarter , M4 4FU

Offers Over £250,000

2 2



North Central, a purpose built apartment block completed in 2019 offers spacious living accommodation and high spec finishes throughout. Located close to Victoria Station, Manchester Arndale Centre plus the abundance of independent shops, bars & restaurants the Northern Quarter is renowned for.

An ideal first time buy or investment with the potential monthly rent of £1300 giving a 5.67% gross yield.

In brief this superb seventh floor comprises of : Entrance hallway with storage cupboard, open plan dual aspect living / kitchen area with integrated oven, hob, extractor, fridge freezer & dishwasher, two double bedrooms with the main being en-suite plus a further main bathroom.

The property also has the added benefit of a secure allocated parking space.



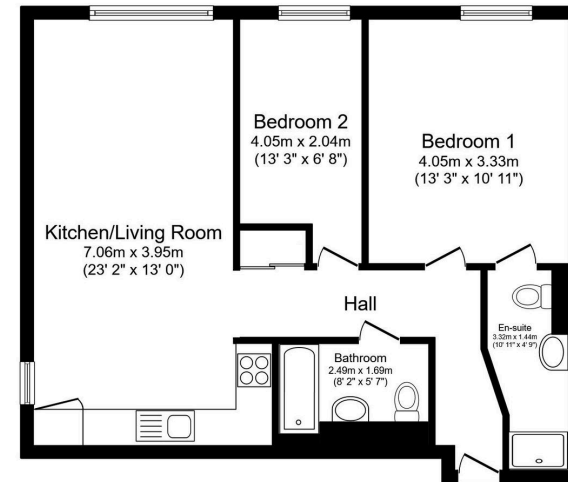


Floor Area
750 sq. ft.

Tenure
Leasehold

Service Charge
£2000 per annum

Ground Rent
£350 per annum



Total floor area 63.4 m² (682 sq.ft.) approx
This floor plan is for illustrative purposes only. It is not drawn to scale. Any measurements, floor areas (including any total floor area), openings and orientation are approximate. No details are guaranteed, they cannot be relied upon for any purpose and they do not form part of any agreement. No liability is taken for any error, omission or misstatement. A party must rely upon its own inspection(s).
Plan produced for Henry Wiltshire. Powered by www.localagent.com

Energy Efficiency Rating

	Current	Potential
Very energy efficient - lower running costs		
(92 plus) A		
(81-91) B	84	84
(69-80) C		
(55-68) D		
(39-54) E		
(21-38) F		
(1-20) G		
Not energy efficient - higher running costs		
England & Wales	EU Directive 2002/91/EC	

UK Offices | Canary Wharf - E14 | Nine Elms - SE1 | Royal Docks - E16 | Bow - E3 | Hayes, Middlesex - UB3 | Manchester - M2

International Offices | Dublin | Abu Dhabi | Hong Kong | Singapore

