



Michigan Point Tower A, 9 Michigan Avenue, Salford Quays, M50

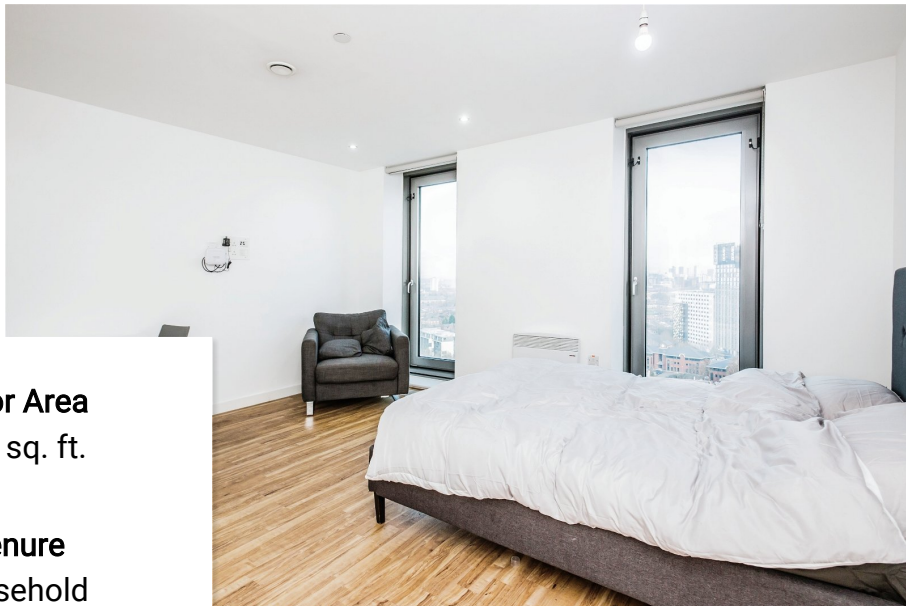
Offers Over £125,000

0 1



7.7% GROSS YIELD. A spacious STUDIO apartment on the 18TH FLOOR of an ICONIC DEVELOPMENT in Salford Quays/ MediaCity with stunning VIEWS ACROSS THE MANCHESTER SKYLINE. **INVESTMENT OPPORTUNITY. TENANTED UNTIL NOVEMBER 2023 WITH A RENTAL INCOME OF £800 PER MONTH | £9,600 PER ANNUM** EWS1 Available. Mortgage Buyers Welcome.



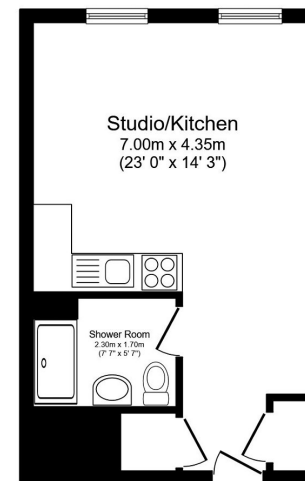


Floor Area
325 sq. ft.

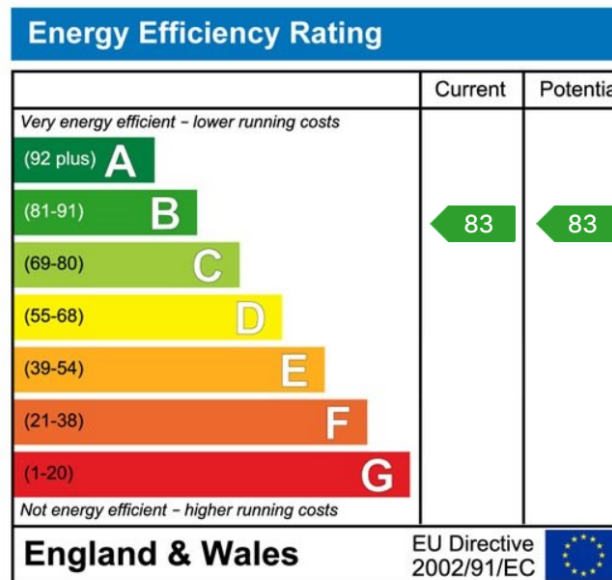
Tenure
Leasehold

Service Charge
£1000 per annum

Ground Rent
£250 per annum



Total floor area 30.2 sq.m. (325 sq.ft.) approx.
This floor plan is for illustrative purposes only. It is not drawn to scale. Any measurements, floor areas (including any total floor area), openings and orientation are approximate. No details are guaranteed, they cannot be relied upon for any purpose and they do not form part of any agreement. No liability is taken for any error, omission or misstatement. A party must rely upon its own inspection(s).
Plan produced for Henry Wiltshire. Powered by www.focalagent.com



UK Offices | Canary Wharf - E14 | Nine Elms - SE1 | Royal Docks - E16 | Bow - E3 | Hayes, Middlesex - UB3 | Manchester - M2

International Offices | Dublin | Abu Dhabi | Hong Kong | Singapore

