



Apartment

TILTMAN AVENUE, EBBSFLEET, KENT

£1,800

FEATURES

- Brand new build
- 1 allocated parking
- Open plan living/dining
- 2bed/2bath
- Private balcony
- Great location



BEXLEY HOMES

2 Bedroom Apartment located in Ebbsfleet

Brand New Two Bedroom, Two Bathroom Apartment – Private Balcony – Allocated Parking.

This brand new two-bedroom, two-bathroom apartment offers contemporary living within one of Kent’s most exciting and well-connected new developments.

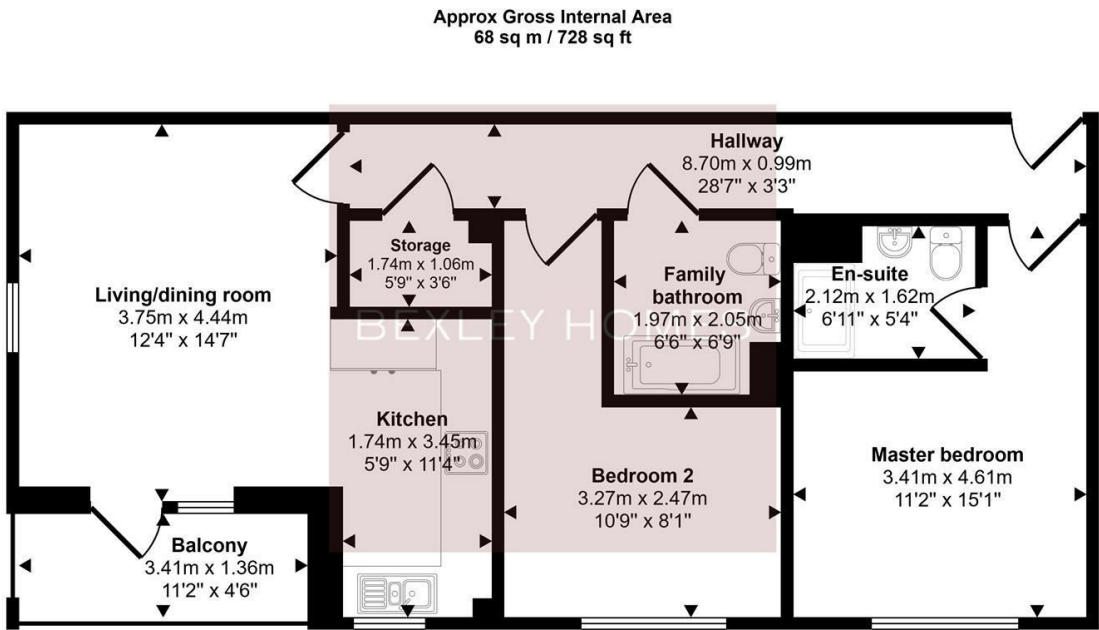
Finished to a high specification throughout, the apartment features a bright and spacious open-plan living and dining area with direct access to a private balcony. The modern kitchen is sleek and well-appointed, while both bedrooms are generously sized, with the master bedroom benefiting from an en-suite. A stylish family bathroom completes the accommodation.

The property further benefits from one allocated undercroft parking space, providing secure and convenient parking.

Call us on
01322 948500

Belvedere@bexleyhomes.co.uk
www.bexleyhomes.co.uk

Council Tax Band
D



Floorplan

This floorplan is only for illustrative purposes and is not to scale. Measurements of rooms, doors, windows, and any items are approximate and no responsibility is taken for any error, omission or mis-statement. Icons of items such as bathroom suites are representations only and may not look like the real items. Made with Made Snappy 360.

Energy Efficiency Rating		
	Current	Potential
Very energy efficient - lower running costs		
(92 plus) A		
(81-91) B		
(69-80) C		
(55-68) D		
(39-54) E		
(21-38) F		
(1-20) G		
Not energy efficient - higher running costs		
England & Wales		EU Directive 2002/91/EC

Agents Note: Whilst every care has been taken to prepare these particulars, they are for guidance purposes only. All measurements are approximate and are for general guidance purposes only and whilst every care has been taken to ensure their accuracy, they should not be relied upon and potential buyers are advised to recheck the measurements.

