

TO LET



Flat - Purpose Built

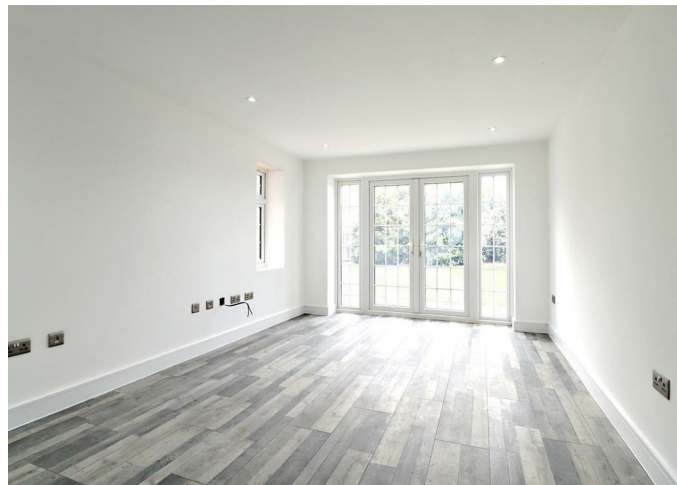
# CHEEMA APARTMENT, BROOMFIELD ROAD, BEXLEYHEATH

Per Month

## £1,400

### FEATURES

- 1 large sized bedroom
- Open plan lounge and kitchen area
- French doors from lounge to communal garden
- Bathroom
- Plenty of street parking ( Parking bay would be at request and availability)
- Communal private garden



BEXLEY HOMES

# 1 Bedroom Flat – Purpose Built located in Bexleyheath

A beautiful one bedroom apartment in Bexleyheath.

Open plan kitchen and lounge area, with French doors leading to the communal garden.

Good sized bathroom.

The apartment is located in a sought after road in Bexleyheath, close by to all local amenities.

Parking bay is at request and availability, but the street parking is free and there plenty of spaces.

Book now to view.

Call us on


01322 948500

Belvedere@bexleyhomes.co.uk

[www.bexleyhomes.co.uk](http://www.bexleyhomes.co.uk)

Council Tax Band

C

Energy Efficiency Rating		
	Current	Potential
Very energy efficient - lower running costs		
(92 plus) <b>A</b>		
(81-91) <b>B</b>		
(69-80) <b>C</b>		
(55-68) <b>D</b>		
(39-54) <b>E</b>		
(21-38) <b>F</b>		
(1-20) <b>G</b>		
Not energy efficient - higher running costs		
England & Wales		EU Directive 2002/91/EC 

Agents Note: Whilst every care has been taken to prepare these particulars, they are for guidance purposes only. All measurements are approximate and are for general guidance purposes only and whilst every care has been taken to ensure their accuracy, they should not be relied upon and potential buyers are advised to recheck the measurements.

BEXLEY HOMES