

TO LET

House - Terraced

MILTON ROAD,  
GRAVESEND,  
DA12

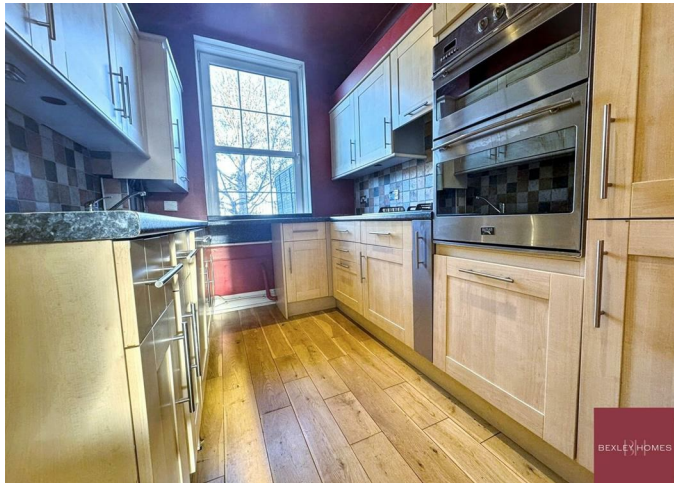
£2,350

#### FEATURES

- 4 Bedroom
- Great location
- Private balcony
- Council band C
- Communal garden/private terrace
- 3 W/C's



BEXLEY HOMES





# 4 Bedroom House – Terraced located in Gravesend

This spacious and well-presented four-bedroom property offers generous accommodation arranged over three floors, ideal for families or professionals.

The ground floor features a bright and roomy open-plan living/dining area, a modern kitchen, and a convenient W/C.

On the first floor, you'll find the family bathroom and three good-sized bedrooms.

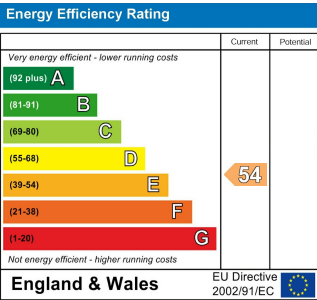
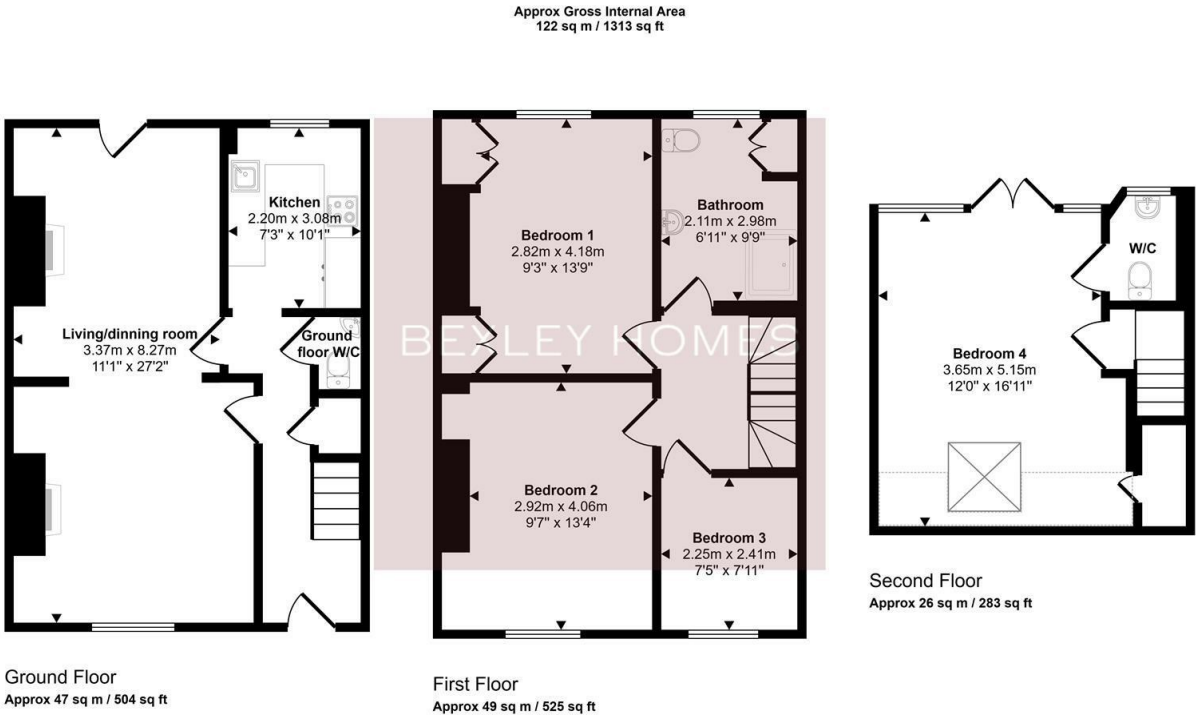
The top floor boasts a large, private master bedroom complete with its own W/C and private balcony, offering a peaceful retreat with views over the surrounding area.

The property will benefit from fresh redecoration throughout, new vinyl flooring in the family bathroom and new carpets in all four bedrooms, giving the

Call us on  
01322 948500

Belvedere@bexleyhomes.co.uk  
www.bexleyhomes.co.uk

Council Tax Band  
C



Agents Note: Whilst every care has been taken to prepare these particulars, they are for guidance purposes only. All measurements are approximate and are for general guidance purposes only and whilst every care has been taken to ensure their accuracy, they should not be relied upon and potential buyers are advised to recheck the measurements.

