



House - Mid Terrace

30 STANMORE
ROAD,
BELVEDERE,
DA17 6EB

£2,200

FEATURES

- 4 BED
- NEWLY REFURBISHED
- AVAILABLE - 15/09/25
- PRIVATE GARDEN
- COUNCIL BAND C



BEXLEY HOMES

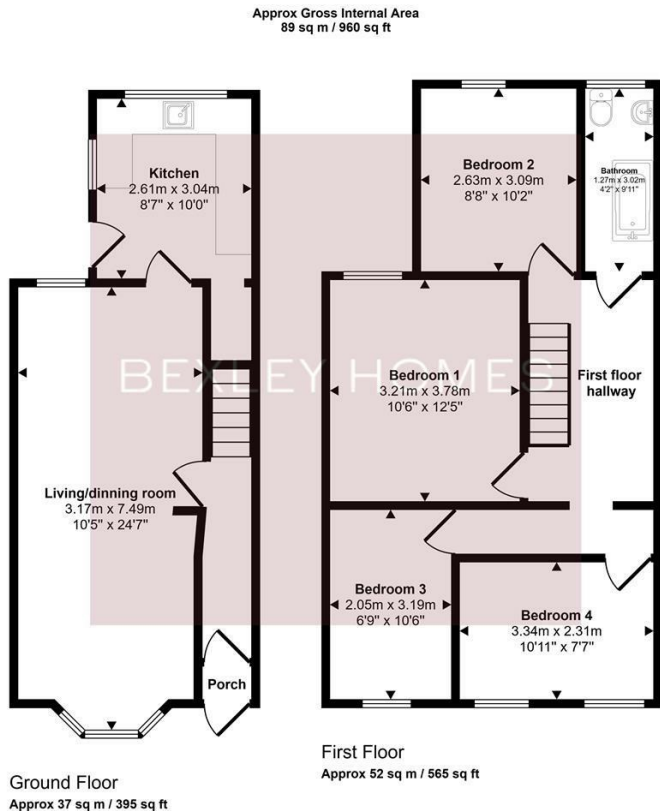
4 Bedroom House – Mid Terrace located in Belvedere

Bexley Homes are delighted to present this spacious 4-bedroom family home in the heart of DA17, currently undergoing a high-quality refurbishment and ready to welcome new tenants from mid-September.

This charming property is being upgraded throughout, with:

- A brand-new fitted kitchen
- Freshly painted interiors
- New carpets being fitted upstairs
- A large private garden, perfect for family life, entertaining or relaxing outdoors

Inside, the home offers a bright living and dining area, a modern family bathroom, and four generously sized bedrooms, providing ample space for families or sharers. Parking is available on-street.

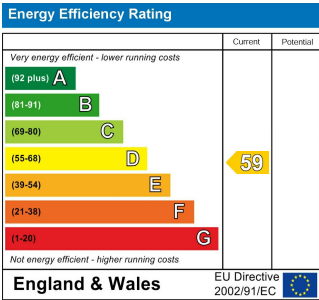


This floorplan is only for illustrative purposes and is not to scale. Measurements of rooms, doors, windows, and any items are approximate and no responsibility is taken for any error, omission or mis-statement. Icons of items such as bathroom suites are representations only and may not look like the real items. Made with Made Snappy 360.

Call us on
01322 948500

Belvedere@bexleyhomes.co.uk
www.bexleyhomes.co.uk

Council Tax Band
C



Agents Note: Whilst every care has been taken to prepare these particulars, they are for guidance purposes only. All measurements are approximate and are for general guidance purposes only and whilst every care has been taken to ensure their accuracy, they should not be relied upon and potential buyers are advised to recheck the measurements.

