

Putney Bridge Road | SW18 1PF

PCM: Monthly Rental Of £2,700

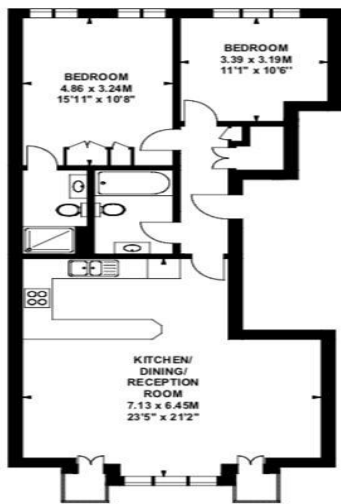


- Two Double Bedrooms
- Two Bathrooms
- Very Spacious
- Opposite Wandsworth Park
- Secure Parking
- Furnished

Description:

GORGEOUS top floor apartment in this MODERN purpose-built block opposite Wandsworth Park. Comprising: two GENEROUS SIZED double bedrooms, one with an EN-SUITE shower room and a separate family bathroom. OPEN-PLAN living room with high ceilings and a LARGE kitchen. The property further benefits from having a secure PARKING space, access to a communal GARDEN and excellent STORAGE space. It is conveniently located and within walking distance to Putney High Street, East Putney Tube Station and Southside Shopping Centre.

Putney Bridge Road, SW15
Approximate gross internal area
82 sq.m / 883 sq. ft



Second Floor

Energy Efficiency Rating

	Current	Potential
Very energy efficient - lower running costs		
(92 plus) A		
(81-91) B		
(69-80) C		
(55-68) D		
(39-54) E		
(21-38) F		
(1-20) G		
Not energy efficient - higher running costs		
England & Wales	EU Directive 2002/91/EC	

The energy efficiency rating is a measure of the overall efficiency of a home. The higher the rating the more energy efficient the home is and the lower the fuel bills are likely to be.

Environmental Impact (CO₂) Rating

	Current	Potential
Very environmentally friendly - lower CO ₂ emissions		
(92 plus) A		
(81-91) B		
(69-80) C		
(55-68) D		
(39-54) E		
(21-38) F		
(1-20) G		
Not environmentally friendly - higher CO ₂ emissions		
England & Wales	EU Directive 2002/91/EC	

The environmental impact rating is a measure of a home's impact on the environment in terms of carbon dioxide (CO₂) emissions. The higher the rating the less impact it has on the environment.

Chartwell
RESIDENTIAL

| 020 8780 6790 |
www.chartwelluk.com
info@chartwelluk.com

Putney Bridge Road | SW18 1PF

PCM: Monthly Rental Of £2,700

MONEY LAUNDERING REGULATIONS 2003

intending purchasers will be asked to produce identification and proof of financial status when an offer is received. We would ask for your co-operation in order that there will be no delay in agreeing the sale.